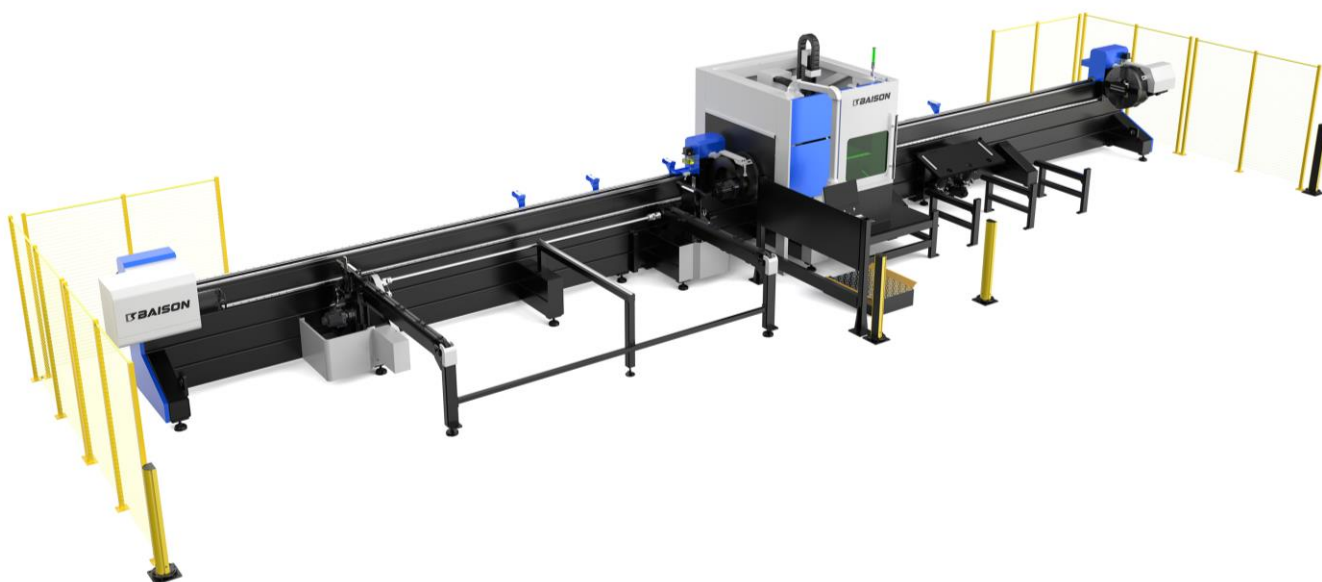


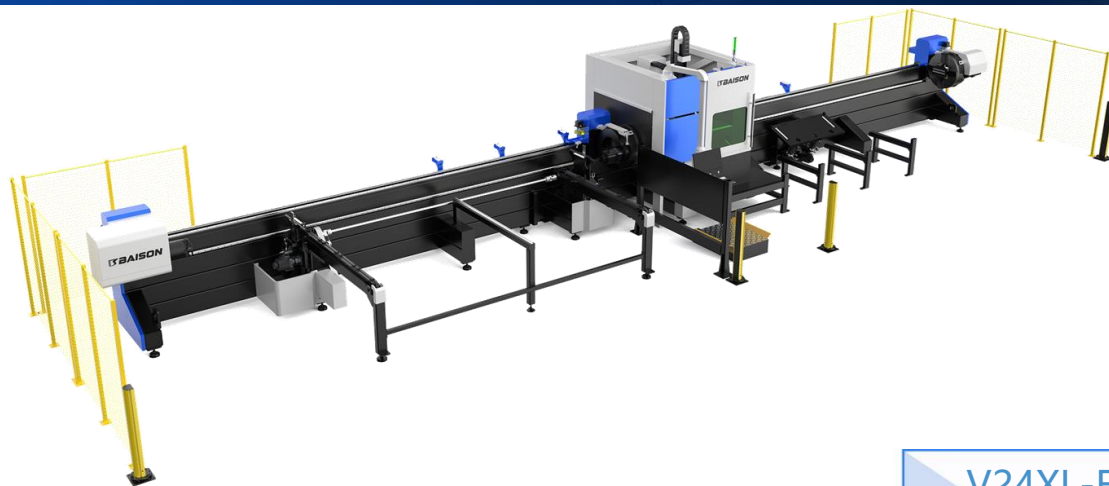


# TECHNICAL PROPOSAL



## V24XL-E (6+6)

# Product Overview



V24XL-E (6+6)

## ADVANTAGES

V24XL-E-3000W professional laser pipe cutting machine is designed for cutting large, heavy and long pipes and other multi-size pipes. It can cut stainless steel, carbon steel and other metal round pipes, square pipes, rectangular pipes, channel steel, I-beam, angle iron and special-shaped pipes, etc. This equipment is widely used in heavy industry machinery, construction machinery, steel structures, hoisting machinery, bridge engineering, elevators and other industries.

### Features:

1. High precision: strong clamping force, more stable cutting.
2. High stability: clamped by three chucks to solve the problem of pipe swinging.
3. Zero tailings: under the condition of satisfying cutting conditions, zero tailings can be achieved.

### Intelligent cutting system:

1. The operation is simple and easy to use, reducing the difficulty of labor.
2. Automatically find the center, correct the pipe material error, and ensure the cutting accuracy.
2. Intelligent nesting, common edge cutting, reducing tailings and production costs.



# Technical Parameter

| Processing Format & Working Range |                   |
|-----------------------------------|-------------------|
| X-axis Stroke                     | 300mm             |
| Y-axis Stroke                     | 6000mm+6000mm     |
| Z-axis Stroke                     | 500mm             |
| W-axis Stroke                     | 360°×N            |
| Accuracy                          |                   |
| X/Y Axis Positioning Accuracy     | ±0.05mm/m         |
| X/Y Axis Repositioning Accuracy   | ±0.05mm/m         |
| Speed                             |                   |
| Max. Moving Speed                 | 80m/min           |
| Max. Chuck Speed                  | 106r/min          |
| Weight & Size                     |                   |
| Max Single Tube Loading Weight    | 400kg             |
| Tail Length                       | 0                 |
| Dimension (L×W×H)                 | 14760*1935*2320mm |

Note:

- 1: To a certain extent, the accuracy depends on the type of workpiece, the pretreatment, the size of the plate and the position of the plate in the working area.
2. The above parameters are subject to change without notice. The final technical parameters are subject to the actual order agreement.



Instagram: @cotear\_oficial  
Facebook: Cotear  
Website: www.cotear.com.ar

Address: Av. Juan B. Justo 7251  
X5019HVG Córdoba  
Argentina

WhatsApp: +54 9 351 3070609  
Phone: 0351 450 0160  
Email: ventas@cotear.com.ar

# Technical Parameter

## Processing Capacity

| Material                           | Maximum thickness (mm) | Cutting thickness suggested (mm) |
|------------------------------------|------------------------|----------------------------------|
| Mild steel (Air / N2 Cutting)      | 3                      | 1-2.5                            |
| Mild steel (O2 Cutting)            | 13                     | 1-12                             |
| Stainless steel (Air / N2 Cutting) | 7                      | 1-6                              |
| Aluminum ( N2 / Air Cutting)       | 6                      | 1-4                              |

## Processing Range

| Pipe Type  | Cutting Range   | Standard Cutting Length |
|------------|---|-------------------------|
| Round      | Ø10-Ø240mm  | 6000mm                  |
| Square     | □10*10-□220*220mm   |                         |
| U-Steel    | 22b# (220x79mm Professional fixtures are required)                  |                         |
| Angle Iron | 22# (220x220mm Professional fixtures are required)                  |                         |
| I-beam     | 22b# (220x112mm Professional fixtures are required)                 |                         |
| H-beam     | 200x200mm (Professional fixtures and nesting software are required) |                         |

Note:

The above data are for reference only, not as acceptance criteria.



Instagram: @cotear\_oficial  
Facebook: Cotear  
Website: www.cotear.com.ar

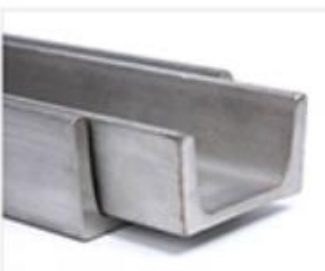
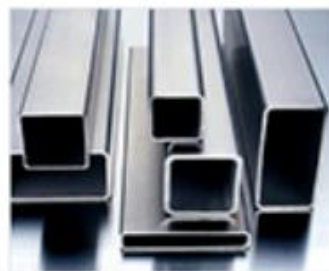
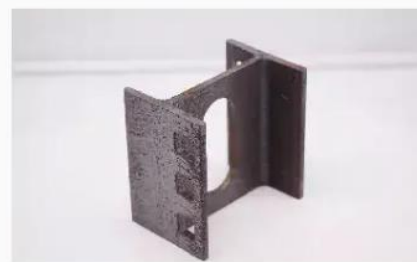
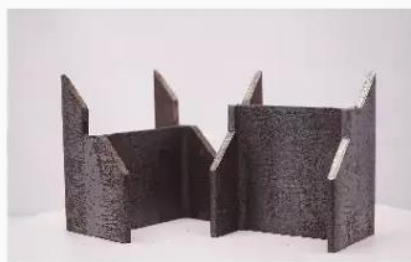
Address: Av. Juan B. Justo 7251  
X5019HVG Córdoba  
Argentina

Phone: +54 9 351 3070609  
Phone: 0351 450 0160  
Email: ventas@cotear.com.ar



# Processing Capability

## Cutting Samples



@cotear\_oficial  
Cotear  
www.cotear.com.ar

Av. Juan B. Justo 7251  
X5019HVG Córdoba  
Argentina

+54 9 351 3070609  
0351 450 0160  
ventas@cotear.com.ar

# Product Configuration

| Configuration      | Brand / Specification                  |
|--------------------|--|
| Control System     | FSCUT 5000A Bus System+TubesT Software |
| Fiber Source       | RAYCUS                                 |
| Cutting Head       | RAYTOOLS BM110 3D                      |
| Servo Motor        | VEICHI                                 |
| Gear And Rack      | KH                                     |
| Guide              | SHAC                                   |
| Proportional Valve | SMC                                    |
| Speed Reducer      | TECHMECH                               |
| Water Chiller      | HANLI                                  |



 @cotear\_oficial  
 Cotear  
[www.cotear.com.ar](http://www.cotear.com.ar)

 Av. Juan B. Justo 7251  
X5019HVG Córdoba  
Argentina

 +54 9 351 3070609  
 0351 450 0160  
 [ventas@cotear.com.ar](mailto:ventas@cotear.com.ar)

# Automatic Loading Rack

| Specification      |        |
|--------------------|--------|
| Loading Length     | 6000mm |
| Single Tube Weight | 400KG  |

Features of semi-automatic feeding rack:

Control the feeding rack by running the automatic feeding program to automatically load the material;

Simply place the pipe on the feeding platform, solving the problems of manual feeding difficulty, low safety factor, and low efficiency.

# Automatic Unloading Rack

| Specification              |                           |
|----------------------------|---------------------------|
| Diameter of Receiving Tube | Any size of pipe material |
| Receiving Length           | 6000mm                    |
| Single Tube Weight         | 400KG                     |

Features of fully automatic material receiving rack:

Double chuck clamping for cutting, more stable clamping and safer cutting. With 2 sets of follow-up cutting racks, it can complete a workpiece length of 1-6 meters

Automatic cutting reduces the safety issues of manual cutting and improves the efficiency of heavy pipe cutting.



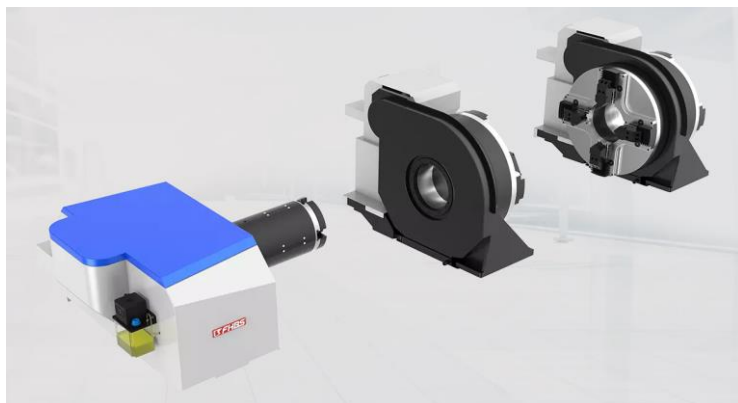
# Product Configuration

## Super Heavy Steel Welding Machine Bed



- Adopts a 12mm super-thick monolithic steel plate for laser blanking.
- The groove welding method is used to make the plates reach an equal strength butt.
- Stress annealing and natural aging treatment are applied to eliminate internal stress.

## Intelligent Clamping System



- The system includes a pneumatic centering function that prevents swinging of the pipe during clamping, improving the linearity of the pipe. It can clamp both sides, providing higher clamping force, better dynamic performance, and faster response speed.

## Intelligent Servo Follow-up Support



- The follow-up support system ensures that the tube is accurately positioned and maintained during the cutting process, resulting in precise cuts and high-quality finished products.





# Product Configuration

## Laser Cutting Head



- Auto focus
- Higher accuracy
- Longer service life
- Calibration and focus lenses and nozzle better protection

## MOTOREDUCER



- Stable operation
- Low noise
- Large output torque
- High speed ratio

## Servo Motor



- High accuracy
- High-speed performance
- High adaptability & stability
- Timeliness, short dynamic response time of motor
- Comfort less fever and noise



@cotear\_oficial  
Cotear  
www.cotear.com.ar

Av. Juan B. Justo 7251  
X5019HVG Córdoba  
Argentina

+54 9 351 3070609  
0351 450 0160  
ventas@cotear.com.ar

# Product Configuration

## Control System



- Easy to use
- Various file editing functions
- Real-time alarm and protection
- Built-in simple nesting function maximizes the utilization of the sheet metal.
- Fly cutting / Secondary perforation cutting, etc.

## Water Cooling System



- Dual cooling function
- Real-time alarm
- Machine protecton

## Guide



- Low noise
- Wear-resistant
- Smoothly,enable fast speed



# Processing Cost

| Items  |                        | Air   | Oxygen | Nitrogen |
|--|------------------------|-------|--------|----------|
| Peak Power Consumption (3KW)                     | Laser                  | 12    | 12     | 12       |
|  | Water Cooling          | 4.16  | 4.16   | 4.16     |
|  | Air Compressor         | 11.00 | /      | /        |
|  | Machine Main Frame     | 28.45 | 28.45  | 28.45    |
|  | Dust Removal Equipment | 3     | 3      | 3        |
| Total Power(KW)                                  |                        | 58.61 | 47.61  | 45.16    |
| Typical Power Consumption(KW) (*75% Total power) |                        | 43.95 | 35.7   | 35.7     |
| Power Consumption Cost (0.15USD/kwh)             |                        | 6.59  | 5.4    | 5.4      |
| Consumable Parts (USD/h)                         |                        | 0.2   | 0.2    | 0.2      |
| Gas Consumption(USD/h)                           |                        | 0     | 2.5    | 6        |
| Total Operating Cost (USD/h)                     |                        | 6.79  | 8.1    | 11.6     |

If the cutting gas is the dry treated compressed air, the cost is actual the air compressor operating electricity + machine power + consumables (protective lens, cutting mouth).

Note:

1. The electricity price and gas price in the above list are for reference only, and the prices will be different in different regions.
2. Auxiliary gas consumption varies when cutting plates of other thickness.



 @cotear\_oficial  
 Cotear  
[www.cotear.com.ar](http://www.cotear.com.ar)

 Av. Juan B. Justo 7251  
 X5019HVG Córdoba  
 Argentina

 +54 9 351 3070609  
 0351 450 0160  
 [ventas@cotear.com.ar](mailto:ventas@cotear.com.ar)

# Inspection & Assembly

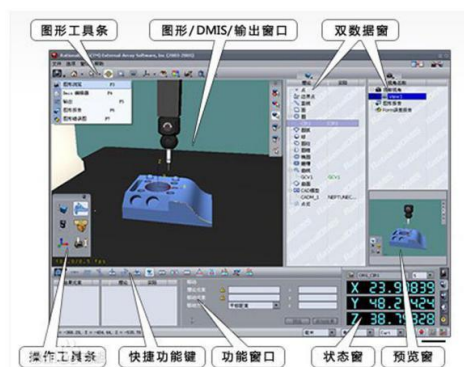
## DURING ASSEMBLY

Check whether the beam machining form and position tolerance is within the design scope to ensure the equipment quality.



### THREE COORDINATE INSPECTION OF BEAM

Three coordinate measuring machine (CMM) is a kind of instrument that can calculate all kinds of geometric shapes and dimensions according to the point data returned by the probe system in three-dimensional measurable space. It is also called three-dimensional element.



The bed beam collimator detects the guide rail surface - measures the straightness of the guide rail to ensure the accuracy of each equipment.





# Inspection & Assembly

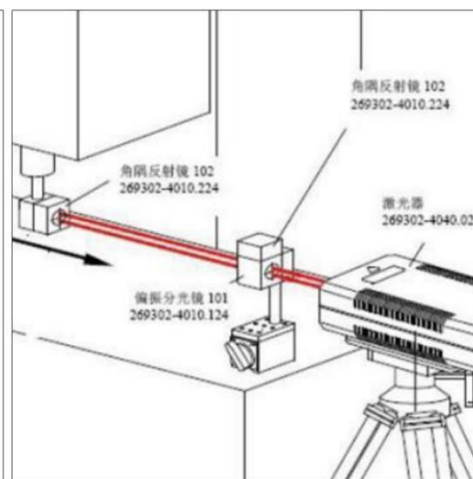
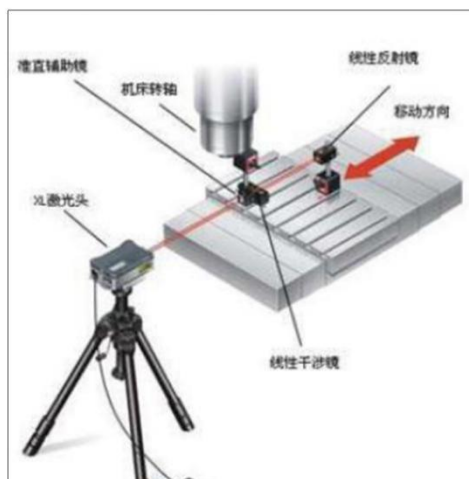
## DURING ASSEMBLY

Installation detection and fixation of guide rail and rack. The professional technicians assemble such important precision parts such as guide rail and rack and adjust them with a dial indicator so as to ensure rack&pinion is assembled properly.



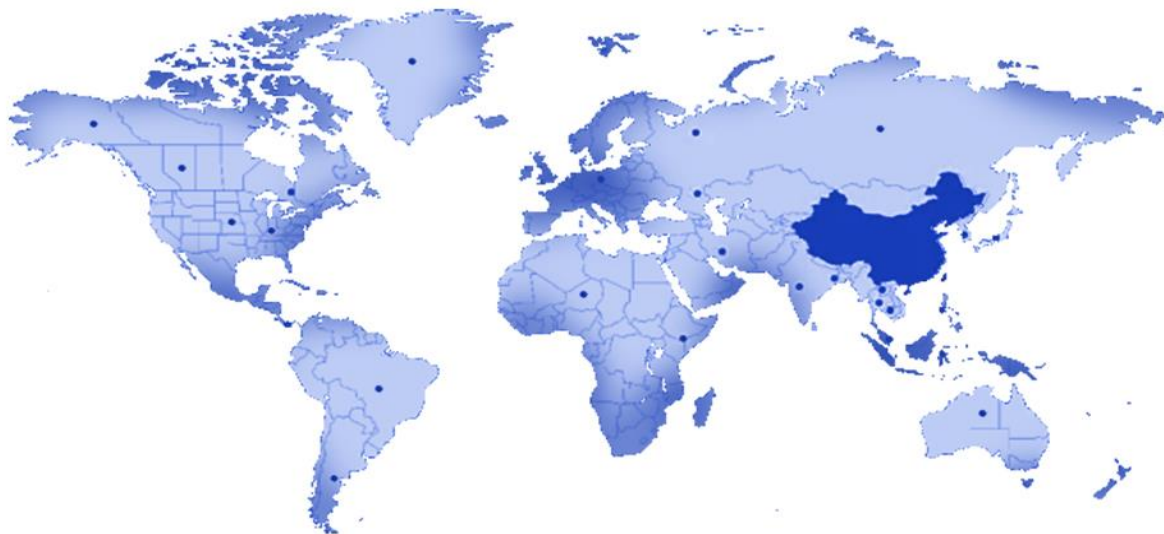
## ASSEMBLY COMPLETION DETECTION

Laser interferometer-It has such advantages as high measurement accuracy and speed,etc Interferometer,mainly laser as light source, constitutes a measuring system withinterference. A laser interferometer with various refractive mirror to the linear position, speed, angle, flatness,straightness, parallelism and perpendicularity measurement work, and can be used as calibration of precision machine tool or measuring instrument.





# Service System



## PRE-SALE SERVICE

- Provide technical guidance, equipment solutions and other information services according to your needs.
- Welcome you to visit our company and equipment exhibition hall. And our engineers will offer the best explanation and demonstration. If you can't come to us, we will do a live broadcast to show you our factory and machine.
- Provide free proofing service.

## SELLING SERVICE



Technicians would offer field installation, debugging and training when they come to the customer's factory.



ON TIME  
Ensure the equipment is delivered on time.



Train customer operators in strict accordance with the equipment operation process to ensure that they are proficient in the operation, maintenance and safe use of the equipment.

## AFTER-SALE SERVICE

- Baisheng provides professional door to door installing and training service, and daily online after sale service and technical advisory.
- We will establish communication group including technicians, after-sales managers, salesmen and operators of customers.



@cotear\_oficial  
Cotear  
www.cotear.com.ar

Av. Juan B. Justo 7251  
X5019HVG Córdoba  
Argentina

+54 9 351 3070609  
0351 450 0160  
ventas@cotear.com.ar

# About Us

## ASSEMBLY WORKSHOP



ASSEMBLY WORKSHOP I



ASSEMBLY WORKSHOP II

## WHOLE INDUSTRIAL CHAIN LAYOUT



· The 10000 m<sup>2</sup> plant area covers sheet metal machining, spray painting, turning, milling, planing, grinding, fine finishing, machine assembly, and process debugging workshops.

· Baisheng Laser has the largest self-owned super-heavy gantry milling and full-temperature CNChigh-temperature annealing furnace processing base in the China, ensuring independent production from each piece of sheet metal to the complete machine equipment, and a strict self and mutual inspection process for each process.

· We use superior materials, constantly improve and optimize the process, so that we can win by quality.



@cotear\_oficial  
Cotear  
www.cotear.com.ar

Av. Juan B. Justo 7251  
X5019HVG Córdoba  
Argentina

+54 9 351 3070609  
0351 450 0160  
ventas@cotear.com.ar



# About Us



► Foshan Huibaisheng Laser Technology Co., Ltd. (Baisheng Laser), founded in 2004, is a high-tech enterprise integrating laser, precision machinery, numerical control, software development and modern management, specializing in the R & D, production and sales of large and medium power laser equipment.

► Since establishment, Baisheng Laser has developed rapidly. As one of the few laser cutting machine manufacturers in China with the ability to independently produce beams, sheet metal and machine tool frames, Baisheng Laser's Foshan headquarters has a plant area of about 100000 square meters, with 200+ sets of precision machining equipment, 500+ employees, 40+ R & D team and 100+ after-sales engineers.

► With strong enterprise strength and strong manufacturing strength, Baisheng Laser has become a leading and world-famous large and medium power laser equipment manufacturer and solution provider in China, and its marketing network covers more than 60 countries and regions around the world.



**YOUR TRUST  
OUR RESPONSIBILITY**



Instagram: @cotear\_oficial  
Facebook: Cotear  
Website: [www.cotear.com.ar](http://www.cotear.com.ar)

Location: Av. Juan B. Justo 7251  
X5019HVG Córdoba  
Argentina

Phone: +54 9 351 3070609  
Phone: 0351 450 0160  
Email: [ventas@cotear.com.ar](mailto:ventas@cotear.com.ar)