

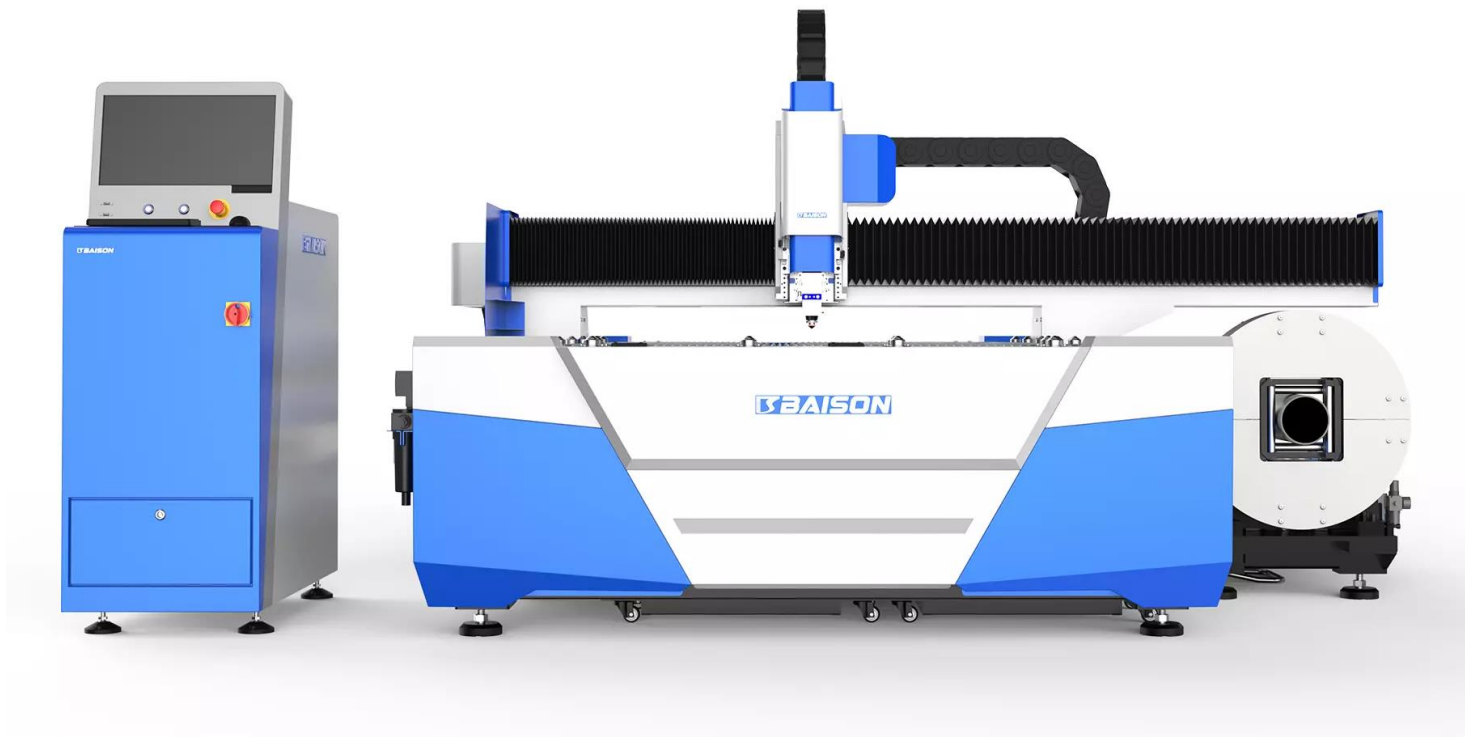


TECHNICAL PROPOSAL



B3- (F3015BE)

Product Overview



B3-(F3015BE)

ADVANTAGES

- **Reduced Downtime**

It can switch between plate and tube cutting quickly and easily, reducing downtime and increasing production efficiency.

- **Saving Budget And Space for Use**

These machines offer the ability to cut both plates and tubes, which increases the range of applications and materials that can be processed. No need to buy two separate machines.



Instagram: @cotear_oficial
Facebook: Cotear
Website: www.cotear.com.ar

Address: Av. Juan B. Justo 7251
X5019HVG Córdoba
Argentina

Phone: +54 9 351 3070609
Phone: 0351 450 0160
Email: ventas@cotear.com.ar

Technical Parameter

Processing Format & Working Range	
Processing Area(L × W)	3000mm×1500mm
X-axis Stroke	2290mm
Y-axis Stroke	3050mm
Z-axis Stroke	300mm
Accuracy	
X/Y Axis Positioning Accuracy	±0.03mm/m
X/Y Axis Repositioning Accuracy	±0.03mm
Speed	
Max. Moving Speed	100m/min
Max. Acc. Speed	1G
Power Parameters	
Phase	3
Rated Voltage	380V
Frequency	50Hz
Protection Grade	IP54
Weight & Size	
Max Single Worktable Loading	1000kg
Machine Weight	2722kg
Dimension (L×W×H)	4535*3520*2100mm

Note:

- 1: To a certain extent, the accuracy depends on the type of workpiece, the pretreatment, the size of the plate and the position of the plate in the working area.
2. The above parameters are subject to change without notice. The final technical parameters are subject to the actual order agreement.



Instagram: @cotear_oficial
Facebook: Cotear
Website: www.cotear.com.ar

Address: Av. Juan B. Justo 7251
X5019HVG Córdoba
Argentina

WhatsApp: +54 9 351 3070609
Phone: 0351 450 0160
Email: ventas@cotear.com.ar

Technical Parameter

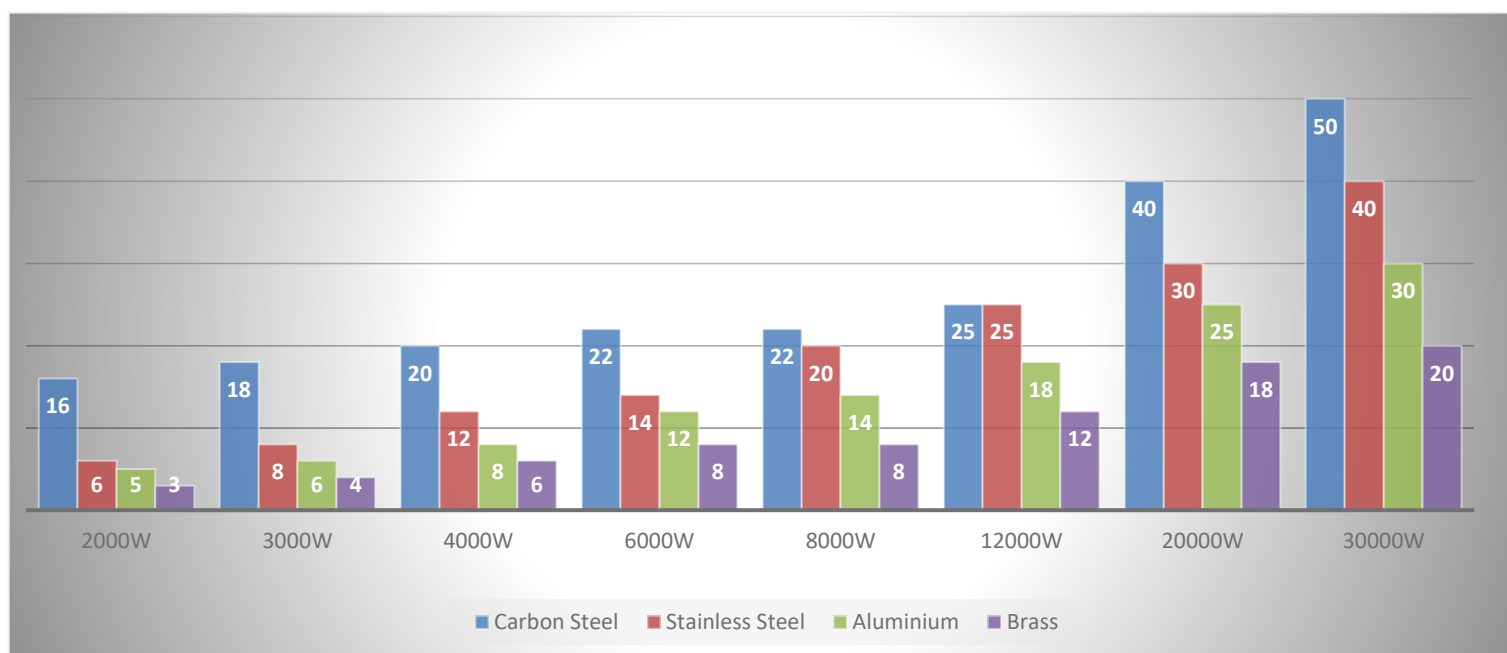
Tube Cutting Device (QG60T7)	
Pipe cutting thickness	0.5-6mm
Single Tube Maximum Load	200KG
Tailing	450mm
Pipe Processing Range	Ø20-Ø240 □20*20-240*240
Pipe Processing Length	6500mm

Note:

- 1: To a certain extent, the accuracy depends on the type of workpiece, the pretreatment, the size of the plate and the position of the plate in the working area.
2. The above parameters are subject to change without notice. The final technical parameters are subject to the actual order agreement.

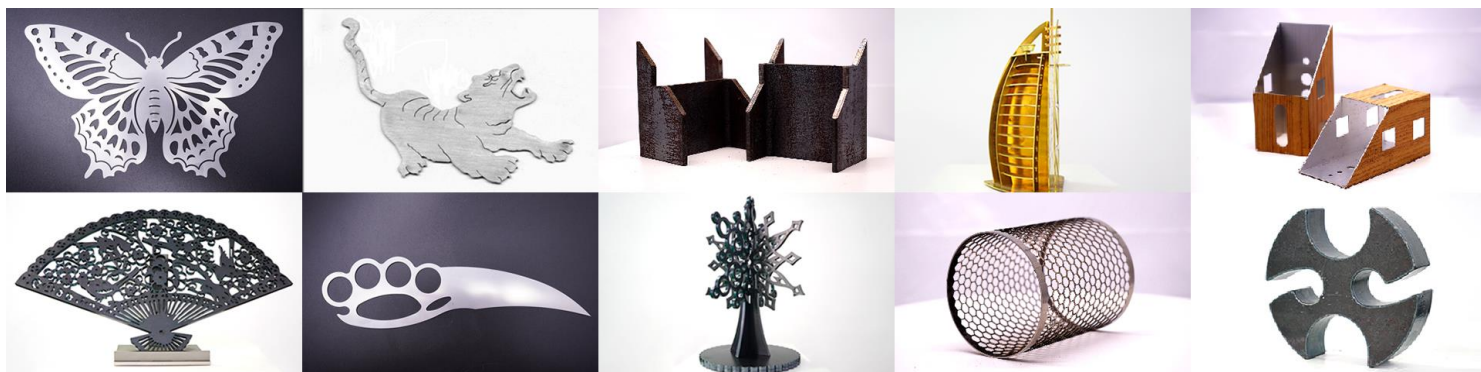


Processing Capability



CUTTING SAMPLES

B3-(F3015BE)



Note:

The above parameters are the max processing capabilities.

The above data are for reference only, not as acceptance criteria.



@cotear_oficial
Cotear
www.cotear.com.ar

Av. Juan B. Justo 7251
X5019HVG Córdoba
Argentina


+54 9 351 3070609
0351 450 0160
ventas@cotear.com.ar

Product Configuration

Configuration	Brand / Specification
B3-(F3015BE)	3000mm*1500mm
Control System	FSCUT3000DE-M (Bus System)
Laser Source	RAYCUS / MAX
Cutting Head	RAYTOOLS BM110 3D
Servo Motor	VEICHI
Gear And Rack	KH
Guide	SHAC
Proportional Valve	SMC
Reducer	TECHMECH
Control Computer	BAISON
Water Chiller	HANLI



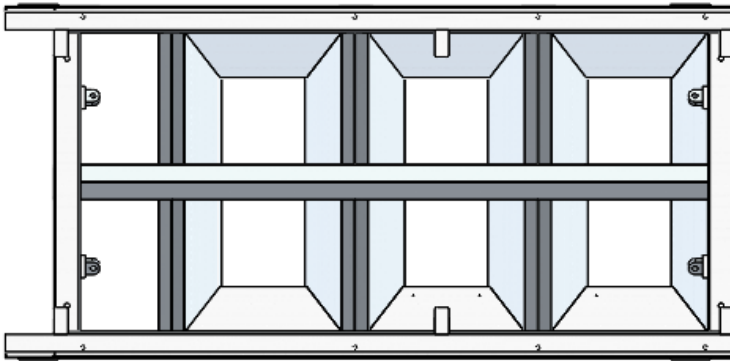
 @cotear_oficial
 Cotear
www.cotear.com.ar

 Av. Juan B. Justo 7251
X5019HVG Córdoba
Argentina

 +54 9 351 3070609
 0351 450 0160
 ventas@cotear.com.ar

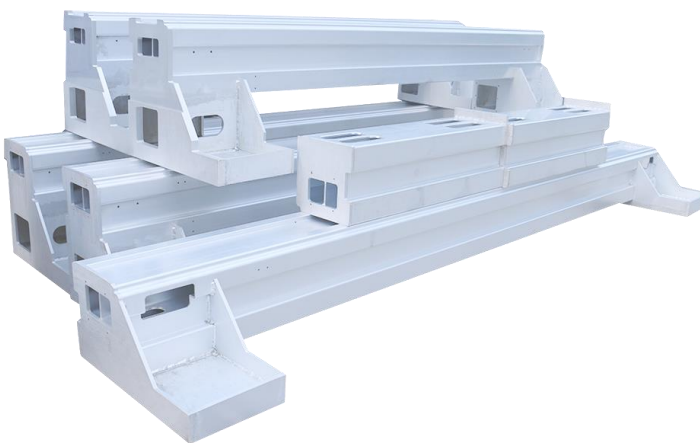
Product Configuration

Super Heavy Steel Welding Machine Bed



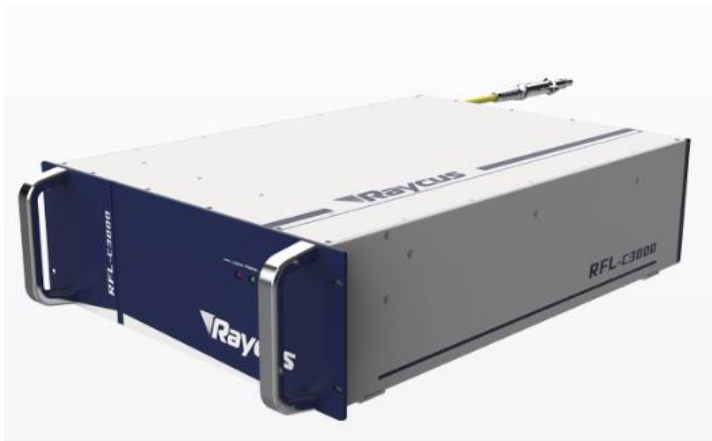
- Adopts a 12mm super-thick monolithic steel plate for laser blanking.
- The groove welding method is used to make the plates reach an equal strength butt.
- Stress annealing and natural aging treatment are applied to eliminate internal stress.

Aviation Aluminum Alloy Beam



- The use of aerospace aluminum crossbeam provides a lightweight and rigid structure, ensuring cutting accuracy during high-speed operation.
- The one-piece extrusion stretch film technology makes the crossbeam more robust in overall construction, resulting in a longer lifespan of the machine.

Laser Source



- Higher Electro-optic conversion efficiency
- Superior reliability & modularity
- Easy maintenance and low down time
- Anti high reflection function



Product Configuration

Laser Cutting Head



- Auto focus
- Higher accuracy
- Longer service life
- Calibration and focus lenses and nozzle better protection

MOTOREDUCER



- Stable operation
- Low noise
- Large output torque
- High speed ratio

Servo Motor

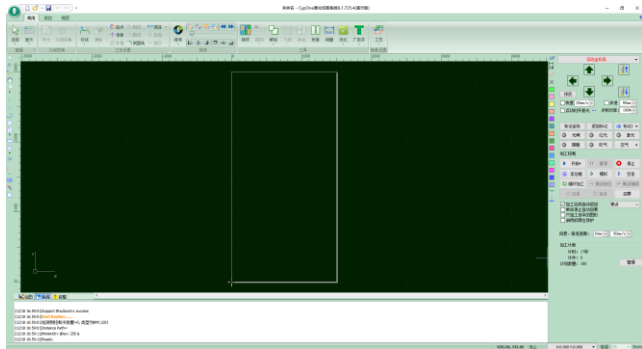


- High accuracy
- High-speed performance
- High adaptability & stability
- Timeliness, short dynamic response time of motor
- Comfort less fever and noise



Product Configuration

CYPCUT Control System



- Easy to use
- Various file editing functions
- Real-time alarm and protection
- Built-in simple nesting function maximizes the utilization of the sheet metal.
- Fly cutting / Secondary perforation cutting, etc.

Water Cooling System



- Dual cooling function
- Real-time alarm
- Machine protection

Guide

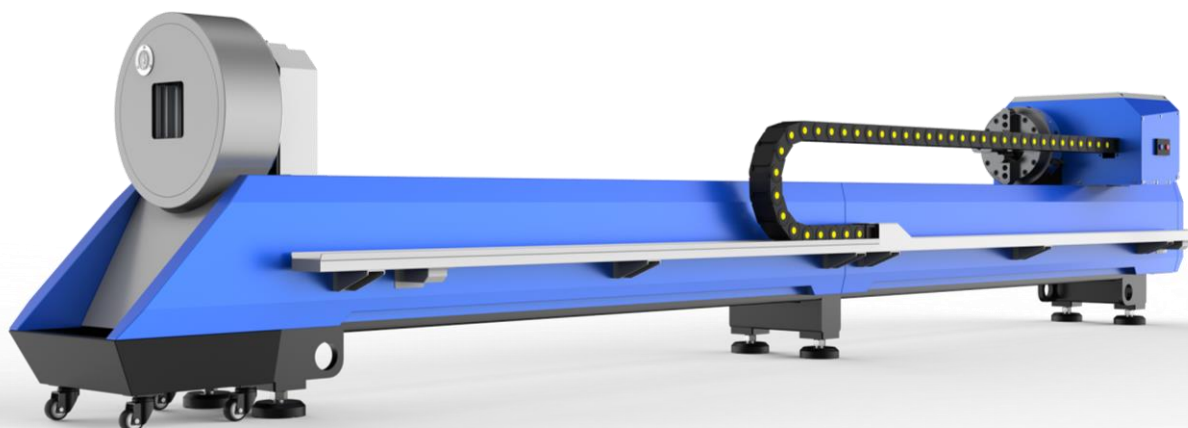


- Low noise
- Wear-resistant
- Smoothly,enable fast speed

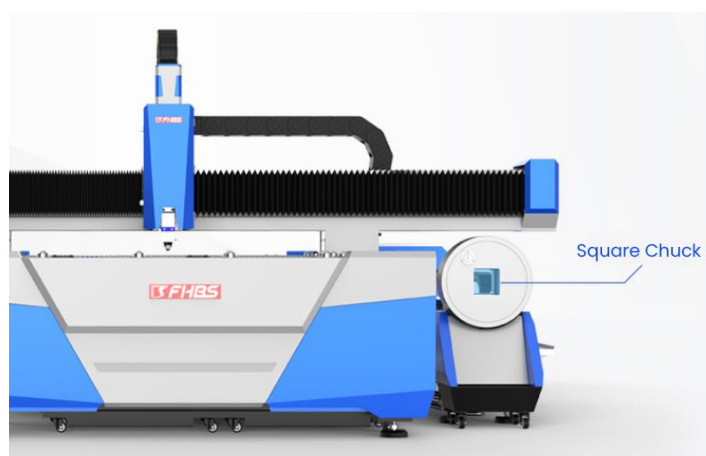


Product Configuration

Tube Cutting Device



- It integrates the functions of plate cutting and pipe cutting, which can meet the cutting needs of various plates and pipes;
- While bringing higher added value to customers, it can also reduce the financial pressure of purchasing two machines, which is more cost-effective.



- Expand the processing range of square tubes and increase the load-bearing capacity of a single tube
- Fully sealed pneumatic chuck design
- The rear chuck has an air blowing function, which can effectively protect the chuck



Processing Cost

Items		Air	Oxygen	Nitrogen
Peak Power Consumption (3KW)	Laser	12	12	12
	Water Cooling	4.16	4.16	4.16
	Air Compressor	11.00	/	/
	Machine Main Frame	28.45	28.45	28.45
	Dust Removal Equipment	3	3	3
Total Power(KW)		58.61	47.61	45.16
Typical Power Consumption(KW) (*75% Total power)		43.95	35.7	35.7
Power Consumption Cost (0.15USD/kwh)		6.59	5.4	5.4
Consumable Parts (USD/h)		0.2	0.2	0.2
Gas Consumption(USD/h)		0	2.5	6
Total Operating Cost (USD/h)		6.79	8.1	11.6

If the cutting gas is the dry treated compressed air, the cost is actual the air compressor operating electricity + machine power + consumables (protective lens, cutting mouth).

Note:

1. The electricity price and gas price in the above list are for reference only, and the prices will be different in different regions.
2. Auxiliary gas consumption varies when cutting plates of other thickness.



 @cotear_oficial
 Cotear
www.cotear.com.ar

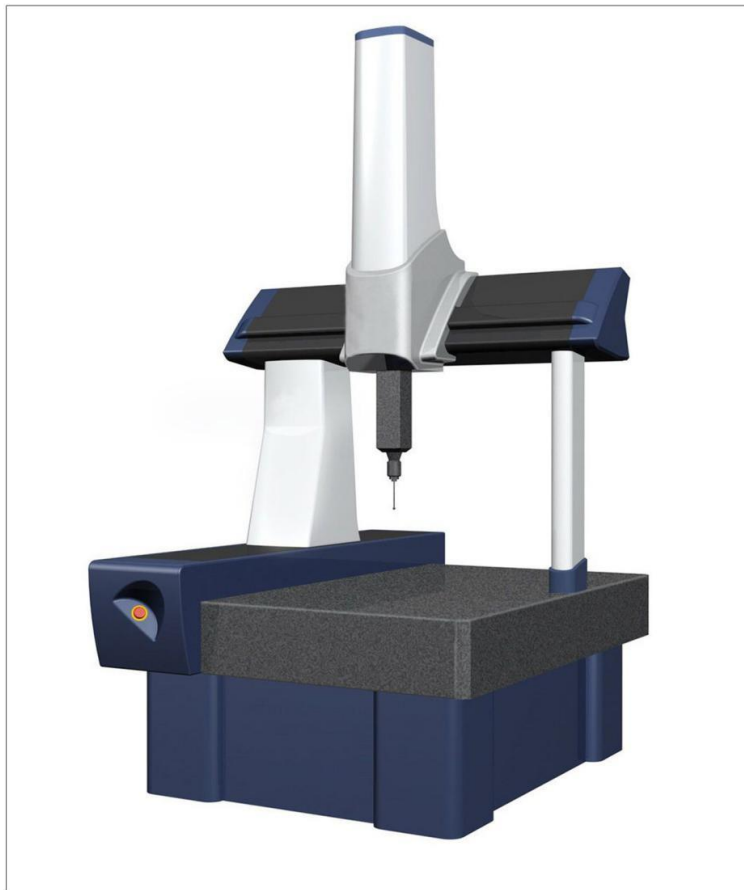
 Av. Juan B. Justo 7251
 X5019HVG Córdoba
 Argentina

 +54 9 351 3070609
 0351 450 0160
 ventas@cotear.com.ar

Inspection & Assembly

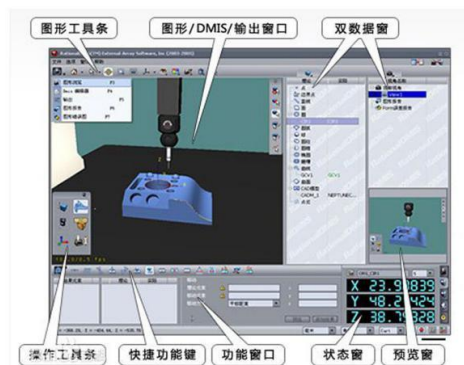
DURING ASSEMBLY

Check whether the beam machining form and position tolerance is within the design scope to ensure the equipment quality.



THREE COORDINATE INSPECTION OF BEAM

Three coordinate measuring machine (CMM) is a kind of instrument that can calculate all kinds of geometric shapes and dimensions according to the point data returned by the probe system in three-dimensional measurable space. It is also called three-dimensional element.



The bed beam collimator detects the guide rail surface - measures the straightness of the guide rail to ensure the accuracy of each equipment.



Inspection & Assembly

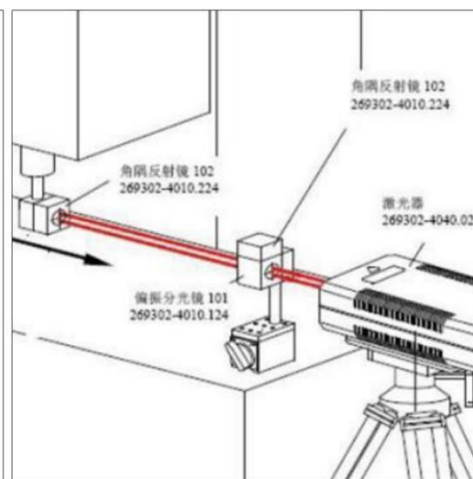
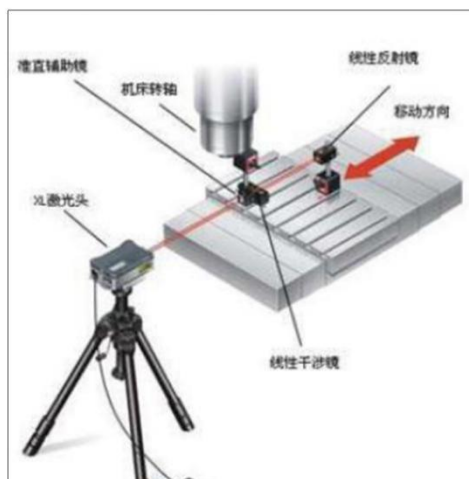
DURING ASSEMBLY

Installation detection and fixation of guide rail and rack. The professional technicians assemble such important precision parts such as guide rail and rack and adjust them with a dial indicator so as to ensure rack&pinion is assembled properly.

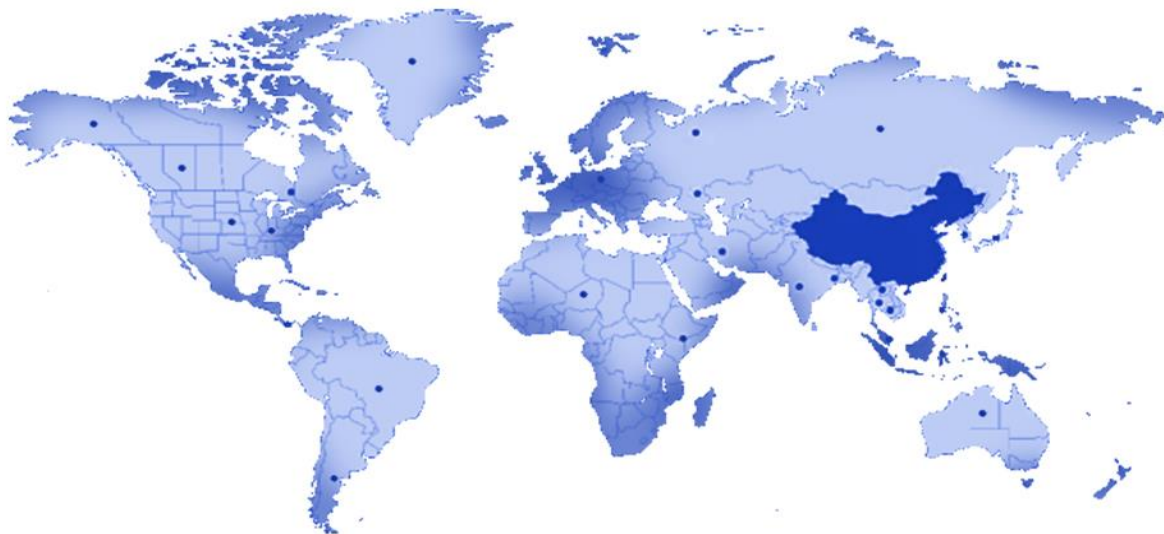


ASSEMBLY COMPLETION DETECTION

Laser interferometer-It has such advantages as high measurement accuracy and speed,etc Interferometer,mainly laser as light source, constitutes a measuring system withinterference. A laser interferometer with various refractive mirror to the linear position, speed, angle, flatness,straightness, parallelism and perpendicularity measurement work, and can be used as calibration of precision machine tool or measuring instrument.



Service System



PRE-SALE SERVICE

- Provide technical guidance, equipment solutions and other information services according to your needs.
- Welcome you to visit our company and equipment exhibition hall. And our engineers will offer the best explanation and demonstration. If you can't come to us, we will do a live broadcast to show you our factory and machine.
- Provide free proofing service.

SELLING SERVICE



Technicians would offer field installation, debugging and training when they come to the customer's factory.



ON TIME
Ensure the equipment is delivered on time.



Train customer operators in strict accordance with the equipment operation process to ensure that they are proficient in the operation, maintenance and safe use of the equipment.

AFTER-SALE SERVICE

- Baisheng provides professional door to door installing and training service, and daily online after sale service and technical advisory.
- We will establish communication group including technicians, after-sales managers, salesmen and operators of customers.



@cotear_oficial
Cotear
www.cotear.com.ar

Av. Juan B. Justo 7251
X5019HVG Córdoba
Argentina

+54 9 351 3070609
0351 450 0160
ventas@cotear.com.ar

About Us

ASSEMBLY WORKSHOP



ASSEMBLY WORKSHOP I



ASSEMBLY WORKSHOP II

WHOLE INDUSTRIAL CHAIN LAYOUT



- The 10000 m² plant area covers sheet metal machining, spray painting, turning, milling, planing, grinding, fine finishing, machine assembly, and process debugging workshops.
- Baisheng Laser has the largest self-owned super-heavy gantry milling and full-temperature CNC high-temperature annealing furnace processing base in China, ensuring independent production from each piece of sheet metal to the complete machine equipment, and a strict self and mutual inspection process for each process.
- We use superior materials, constantly improve and optimize the process, so that we can win by quality.



@cotear_oficial
Cotear
www.cotear.com.ar

Av. Juan B. Justo 7251
X5019HVG Córdoba
Argentina

+54 9 351 3070609
0351 450 0160
ventas@cotear.com.ar

About Us



► Foshan Huibaisheng Laser Technology Co., Ltd. (Baisheng Laser), founded in 2004, is a high-tech enterprise integrating laser, precision machinery, numerical control, software development and modern management, specializing in the R & D, production and sales of large and medium power laser equipment.

► Since establishment, Baisheng Laser has developed rapidly. As one of the few laser cutting machine manufacturers in China with the ability to independently produce beams, sheet metal and machine tool frames, Baisheng Laser's Foshan headquarters has a plant area of about 100000 square meters, with 200+ sets of precision machining equipment, 500+ employees, 40+ R & D team and 100+ after-sales engineers.

► With strong enterprise strength and strong manufacturing strength, Baisheng Laser has become a leading and world-famous large and medium power laser equipment manufacturer and solution provider in China, and its marketing network covers more than 60 countries and regions around the world.



**YOUR TRUST
OUR RESPONSIBILITY**



Instagram: @cotear_oficial
Facebook: Cotear
Website: www.cotear.com.ar

Location: Av. Juan B. Justo 7251
X5019HVG Córdoba
Argentina

Phone: +54 9 351 3070609
Phone: 0351 450 0160
Email: ventas@cotear.com.ar