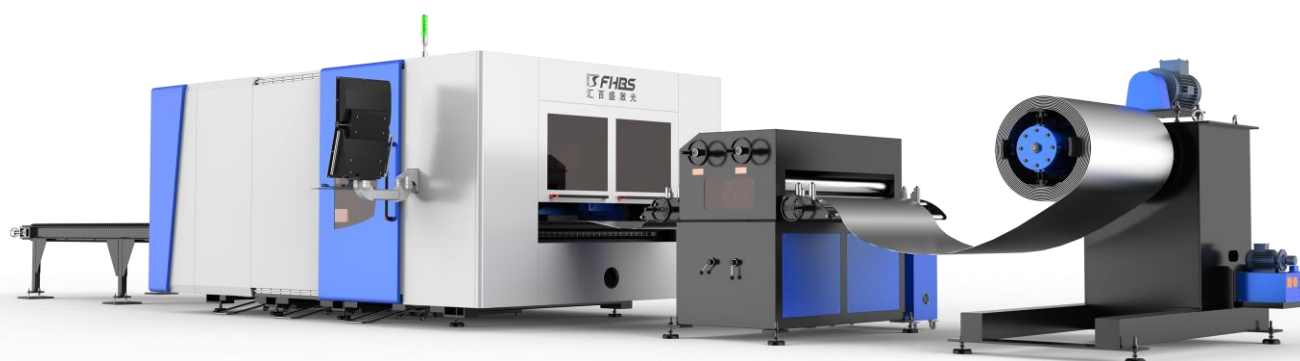


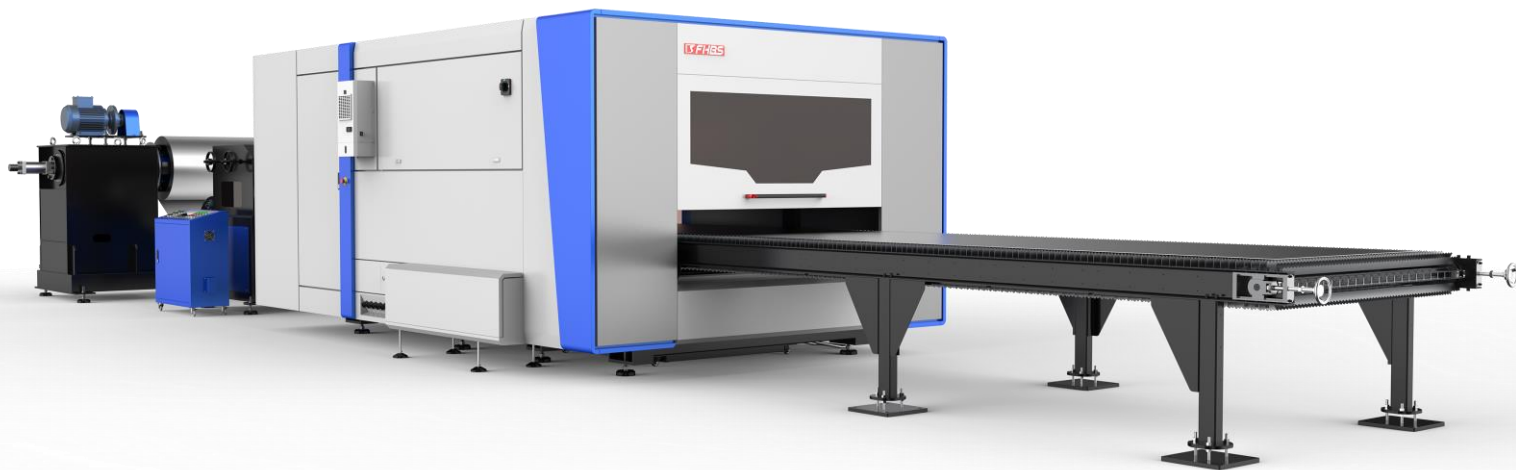


# TECHNICAL PROPOSAL



## SJ3-F3015JDE

# Product Overview



SJ3-F3015JDE

## ADVANTAGES

- **Coil Uncoiling**

The machine can automatically uncoil the metal coil and feed it into the leveling section.

- **Automatic Leveling**

The machine has an automatic leveling system that can effectively flatten and level the coil before cutting.

- **Edge Trimming**

The machine can trim the edges of the coil to ensure a clean and smooth cutting surface.



Instagram: @cotear\_oficial  
Facebook: Cotear  
Website: [www.cotear.com.ar](http://www.cotear.com.ar)

Address: Av. Juan B. Justo 7251  
X5019HVG Córdoba  
Argentina

Phone: +54 9 351 3070609  
Phone: 0351 450 0160  
Email: [ventas@cotear.com.ar](mailto:ventas@cotear.com.ar)

# Technical Parameter

Processing Format & Working Range	
Processing Area( L × W )	3000*1500mm
X-axis Stroke	1500mm
Y-axis Stroke	3050mm
Z-axis Stroke	100mm
Accuracy	
X/Y Axis Positioning Accuracy	±0.03mm/m
X/Y Axis Repositioning Accuracy	±0.03mm
Speed	
Max. Moving Speed	120m/min
Max. Acc. Speed	1.2G
Power Parameters	
Phase	3
Rated Voltage	380V
Frequency	50Hz
Protection Grade	IP54
Weight & Size	
Max Single Worktable Loading	500kg
Machine Weight	4328KG
Dimension (L×W×H)	9150*3090*2200mm (With 3M extension platform)

Note:

- 1: To a certain extent, the accuracy depends on the type of workpiece, the pretreatment, the size of the plate and the position of the plate in the working area.
2. The above parameters are subject to change without notice. The final technical parameters are subject to the actual order agreement.

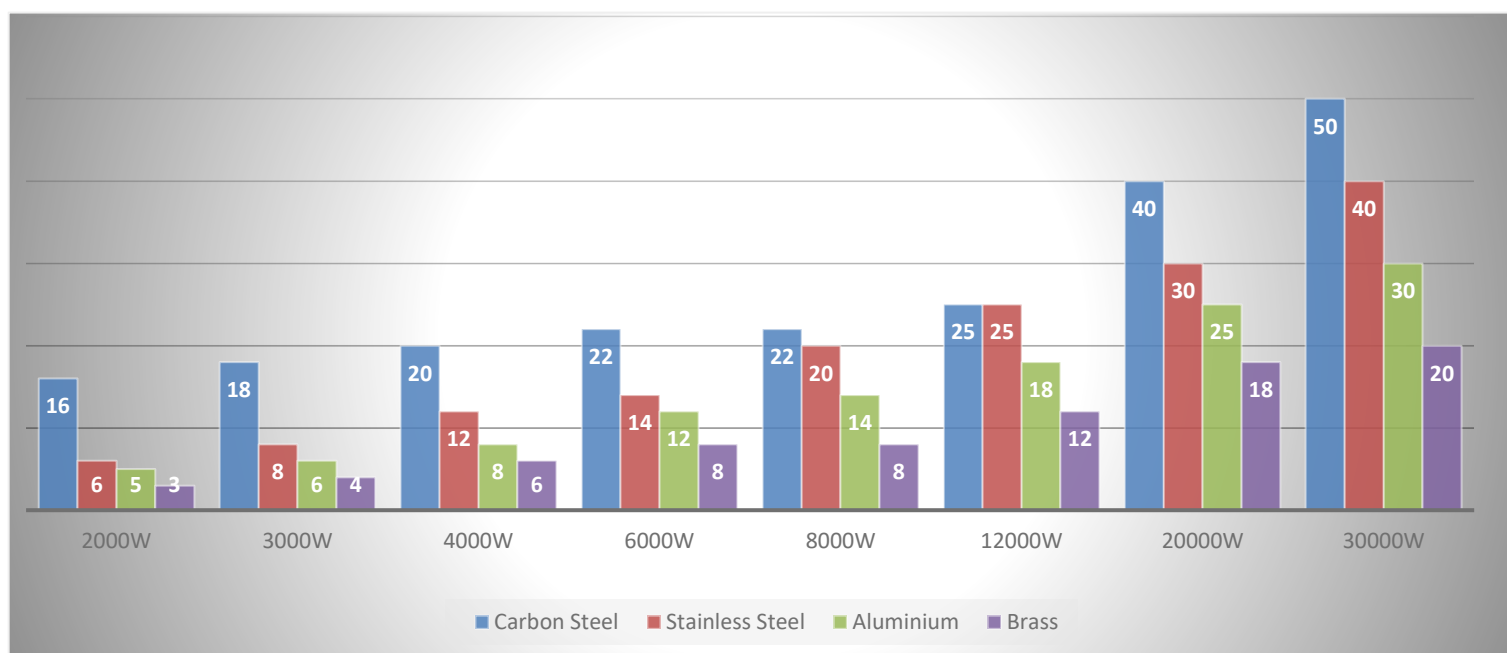


📷 @cotear\_oficial  
f Cotear  
www.cotear.com.ar

📍 Av. Juan B. Justo 7251  
X5019HVG Córdoba  
Argentina

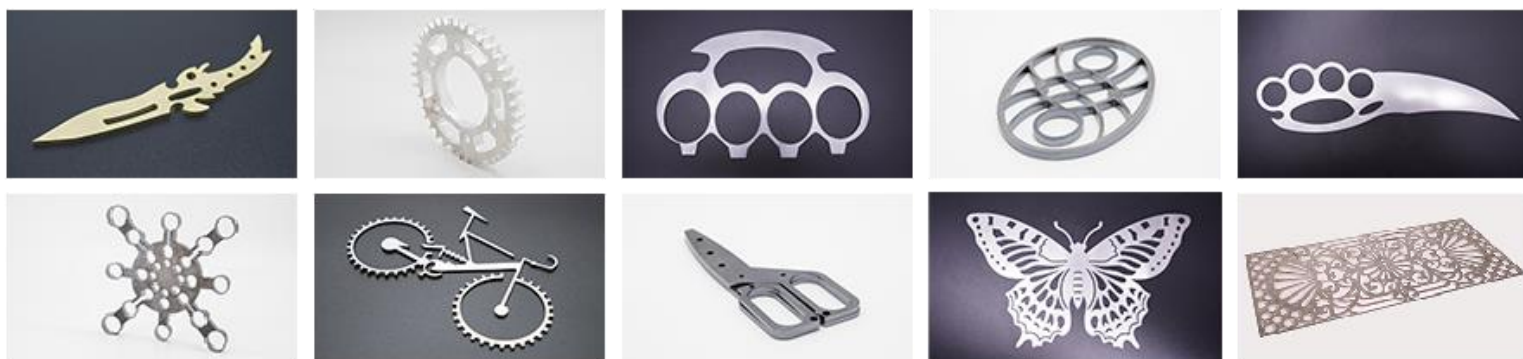
📞 +54 9 351 3070609  
☎ 0351 450 0160  
✉ ventas@cotear.com.ar

# Processing Capability



## CUTTING SAMPLES

SJ3-F3015JDE



Note:

The above parameters are the max processing capabilities.

The above data are for reference only, not as acceptance criteria.



@cotear\_oficial  
Cotear  
www.cotear.com.ar

Av. Juan B. Justo 7251  
X5019HVG Córdoba  
Argentina

+54 9 351 3070609  
0351 450 0160  
ventas@cotear.com.ar

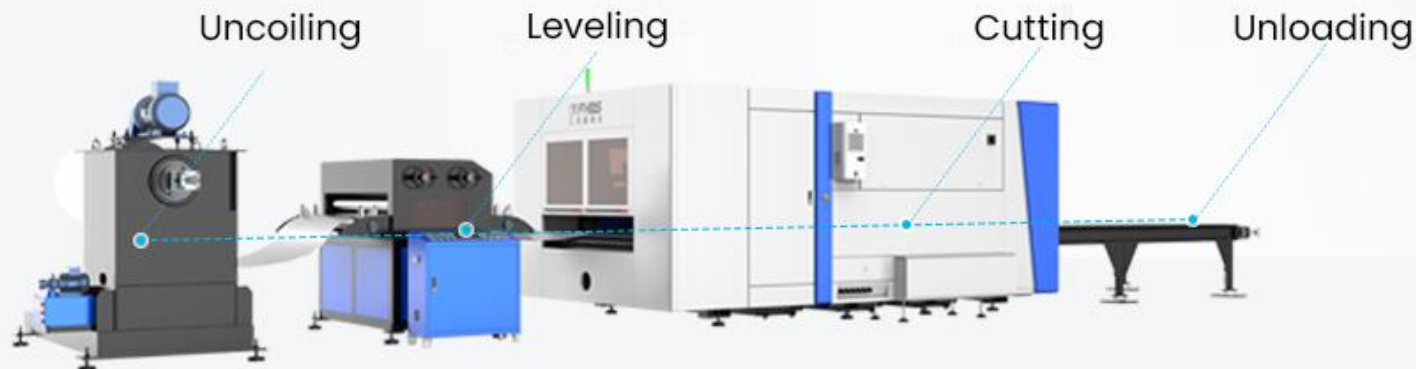
# Product Configuration

Configuration	Brand / Specification
F3015JDE	3000*1500mm
Control System	1500W ~ 3000W: FSCUT2000E
Laser Source	RAYCUS
Cutting Head	RAYTOOLS BM110
Servo Motor	VEICHI
Gear And Rack	KH
Guide	SHAC
Proportional Valve	SMC
Reducer	TECHMECH
Control Computer	BAISON
Water Chiller	HANLI





# Product Configuration



The "three-in-one" integrated production line seamlessly integrates coil material transport, material leveling, and cutting, providing smart solutions for factories, reducing labor costs, and improving production efficiency.



The integrated workbench features continuous coil material transport, synchronous feeding and discharging, and superior continuous transport performance, as well as seamless connection to cutting force.



Instagram: @cotear\_oficial  
Facebook: Cotear  
Website: [www.cotear.com.ar](http://www.cotear.com.ar)

Address: Av. Juan B. Justo 7251  
X5019HVG Córdoba  
Argentina

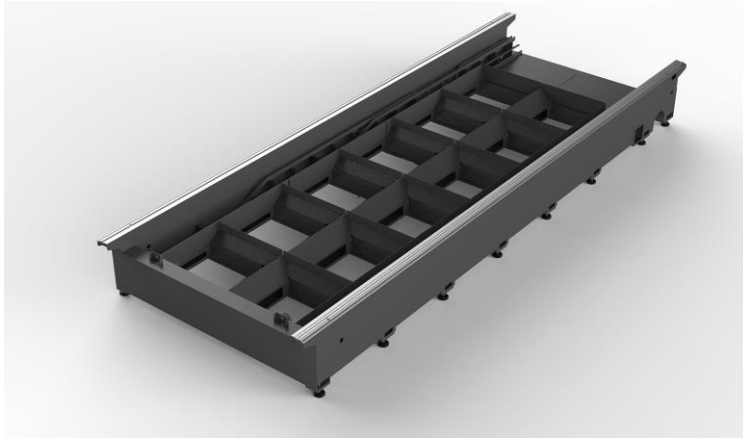
Phone: +54 9 351 3070609  
Phone: 0351 450 0160  
Email: [ventas@cotear.com.ar](mailto:ventas@cotear.com.ar)

Product Name	Leveling Width (MM)	Leveling Thickness (MM)		Weight Capacity (T)
		Ccarbon Steel	Stainless Steel	
Three in One Feeding Line	1500	0.5-2	0.5-1.5	8
		0.8-3	0.8-2	
		0.5-2	0.5-1.5	
		0.5-3	0.5-1.5	



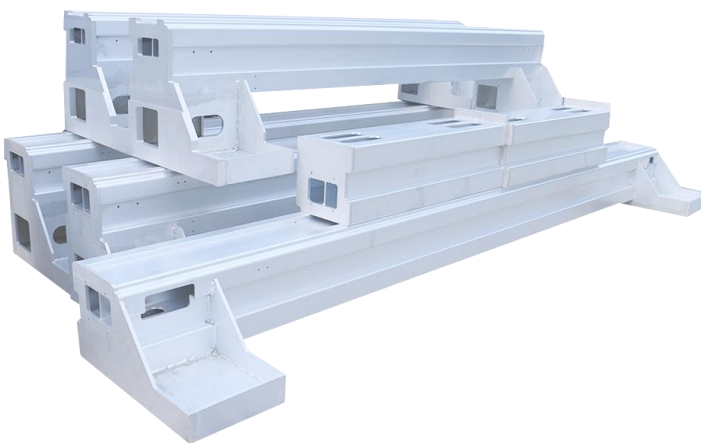
# Product Configuration

## Super Heavy Steel Welding Machine Bed



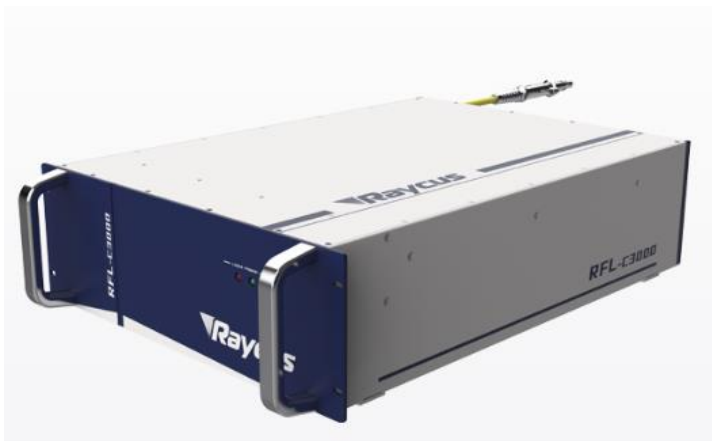
- Adopts a 12mm super-thick monolithic steel plate for laser blanking.
- The groove welding method is used to make the plates reach an equal strength butt.
- Stress annealing and natural aging treatment are applied to eliminate internal stress.

## Aviation Aluminum Alloy Beam



- The use of aerospace aluminum crossbeam provides a lightweight and rigid structure, ensuring cutting accuracy during high-speed operation.
- The one-piece extrusion stretch film technology makes the crossbeam more robust in overall construction, resulting in a longer lifespan of the machine.

## Laser Source



- Higher Electro-optic conversion efficiency
- Superior reliability & modularity
- Easy maintenance and low down time
- Anti high reflection function





# Product Configuration

## Laser Cutting Head



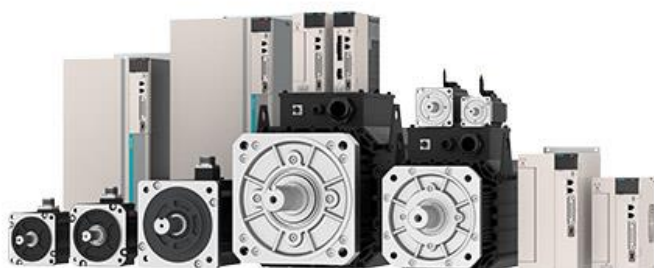
- Auto focus
- Higher accuracy
- Longer service life
- Calibration and focus lenses and nozzle better protection

## MOTOREDUCER



- Stable operation
- Low noise
- Large output torque
- High speed ratio

## Servo Motor

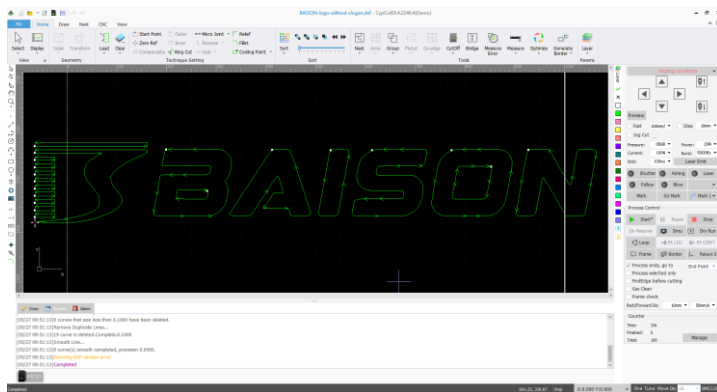


- High accuracy
- High-speed performance
- High adaptability & stability
- Timeliness, short dynamic response time of motor
- Comfort less fever and noise



# Product Configuration

## FSCUT Control System



- Easy to use
- Various file editing functions
- Real-time alarm and protection
- Built-in simple nesting function maximizes the utilization of the sheet metal.
- Fly cutting / Secondary perforation cutting, etc.

## Water Cooling System



## Guide



- Dual cooling function
- Real-time alarm
- Machine protection
- Low noise
- Wear-resistant
- Smoothly,enable fast speed



# Processing Cost

1.5KW

Items		Air	Oxygen	Nitrogen
Peak Power Consumption (KW)	Laser	5.50	5.50	5.50
	Water Cooling	3.50	3.50	3.50
	Air Compressor	7.50	/	/
	Machine Main Frame	5.00	5.00	5.00
	Dust Removal Equipment	1.50	1.50	1.50
Total Power(KW)		23.00	15.50	15.50
Typical Power Consumption(KW) (*75% Total power)		17.25	11.63	11.63
Power Consumption Cost (0.15USD/kwh)		2.59	1.74	1.74
Consumable Parts (USD/h)		0.2	0.2	0.2
Gas Consumption(USD/h)		0	2.5	6
Total Operating Cost (USD/h)		2.79	4.44	7.94

If the cutting gas is the dry treated compressed air, the cost is actual the air compressor operating electricity + machine power + consumables (protective lens, cutting mouth).

Note:

1. The electricity price and gas price in the above list are for reference only, and the prices will be different in different regions.
2. Auxiliary gas consumption varies when cutting plates of other thickness.



@cotear\_oficial  
 Cotear  
[www.cotear.com.ar](http://www.cotear.com.ar)

Av. Juan B. Justo 7251  
 X5019HVG Córdoba  
 Argentina

+54 9 351 3070609  
 0351 450 0160  
[ventas@cotear.com.ar](mailto:ventas@cotear.com.ar)

# Processing Cost

2KW

Items		Air	Oxygen	Nitrogen
Peak Power Consumption (2KW)	Laser	7KW	7KW	7KW
	Water Cooling	4KW	4KW	4KW
	Air Compressor	7.5KW	/	/
	Machine Main Frame	6.5KW	6.5KW	6.5KW
	Dust Removal Equipment	1.5KW	1.5KW	1.5KW
Total Power(KW)		USD 0.1/H	USD 0.1/H	USD 0.1/H
Typical Power Consumption(KW) (*75% Total power)		0	USD 2/H	USD 5/H
Power Consumption Cost (0.15USD/kwh)		≈26.5KW	≈19KW	≈19KW
Consumable Parts (USD/h)		≈19.9KW	≈14.3KW	≈14.3KW
Gas Consumption(USD/h)		2.98+0.1 ≈3.08 USD/h	2.14+0.1+2 ≈4.24 USD/h	2.14+0.1+5 ≈7.24 USD/h
Total Operating Cost (USD/h)		7KW	7KW	7KW

If the cutting gas is the dry treated compressed air, the cost is actual the air compressor operating electricity + machine power + consumables (protective lens, cutting mouth).

Note:

1. The electricity price and gas price in the above list are for reference only, and the prices will be different in different regions.
2. Auxiliary gas consumption varies when cutting plates of other thickness.



@cotear\_oficial  
 Cotear  
[www.cotear.com.ar](http://www.cotear.com.ar)

Av. Juan B. Justo 7251  
 X5019HVG Córdoba  
 Argentina

+54 9 351 3070609  
 0351 450 0160  
[ventas@cotear.com.ar](mailto:ventas@cotear.com.ar)

# Processing Cost

3KW

Items		Air	Oxygen	Nitrogen
Peak Power Consumption (3KW)	Laser	10.00	10.00	10.00
	Water Cooling	4.16	4.16	4.16
	Air Compressor	11.00	/	/
	Machine Main Frame	9.00	9.00	9.00
	Dust Removal Equipment	1.50	1.50	1.50
Total Power(KW)		35.66	24.66	24.66
Typical Power Consumption(KW) (*75% Total power)		26.74	18.49	18.49
Power Consumption Cost (0.15USD/kwh)		4.01	2.77	2.77
Consumable Parts (USD/h)		0.2	0.2	0.2
Gas Consumption(USD/h)		0	2.5	6
Total Operating Cost (USD/h)		4.21	5.47	8.97

If the cutting gas is the dry treated compressed air, the cost is actual the air compressor operating electricity + machine power + consumables (protective lens, cutting mouth).

Note:

1. The electricity price and gas price in the above list are for reference only, and the prices will be different in different regions.
2. Auxiliary gas consumption varies when cutting plates of other thickness.



@cotear\_oficial  
 Cotear  
[www.cotear.com.ar](http://www.cotear.com.ar)

Av. Juan B. Justo 7251  
 X5019HVG Córdoba  
 Argentina

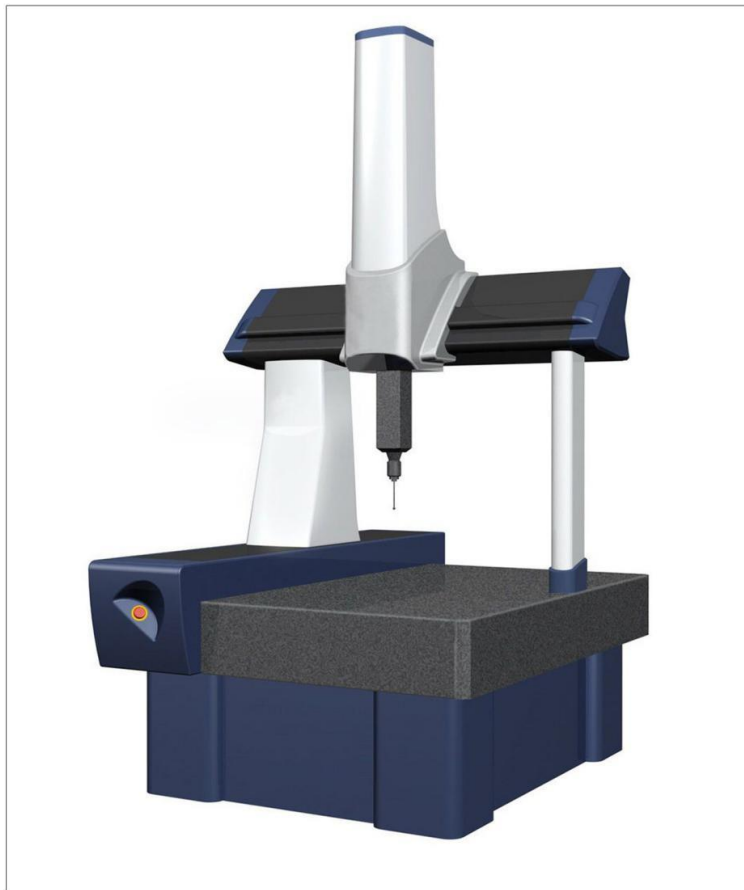
+54 9 351 3070609  
 0351 450 0160  
[ventas@cotear.com.ar](mailto:ventas@cotear.com.ar)



# Inspection & Assembly

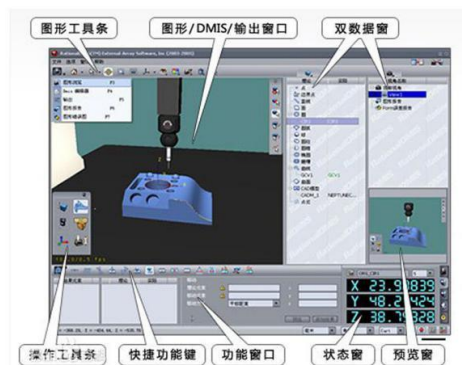
## DURING ASSEMBLY

Check whether the beam machining form and position tolerance is within the design scope to ensure the equipment quality.



### THREE COORDINATE INSPECTION OF BEAM

Three coordinate measuring machine (CMM) is a kind of instrument that can calculate all kinds of geometric shapes and dimensions according to the point data returned by the probe system in three-dimensional measurable space. It is also called three-dimensional element.



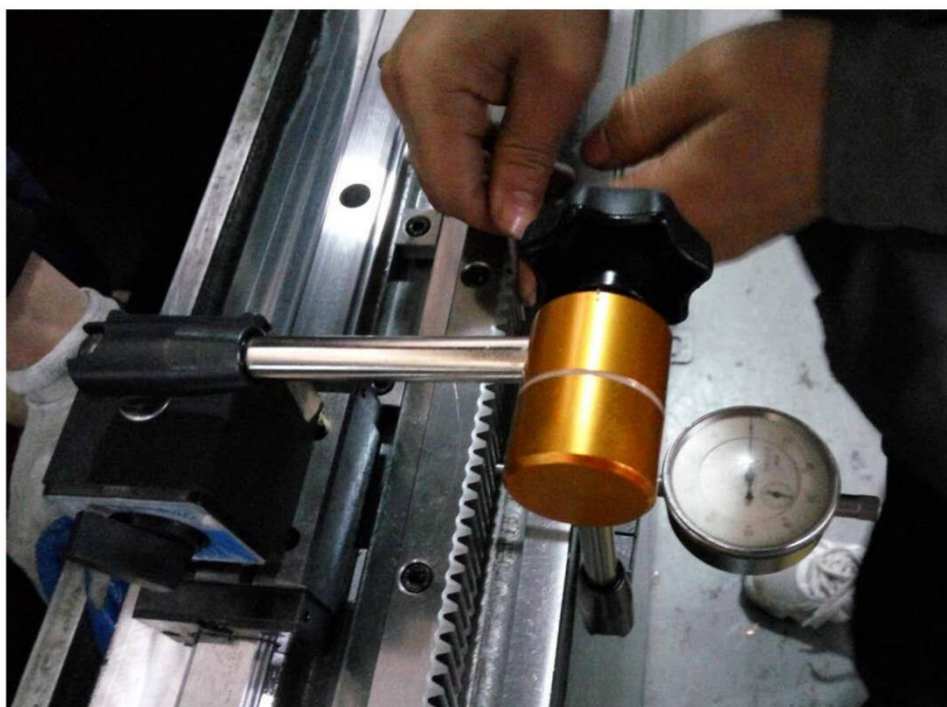
The bed beam collimator detects the guide rail surface - measures the straightness of the guide rail to ensure the accuracy of each equipment.



# Inspection & Assembly

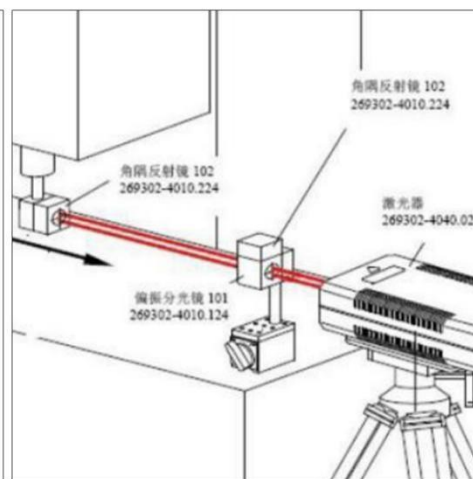
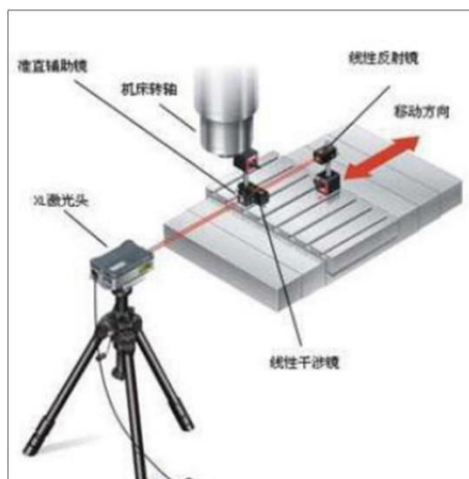
## DURING ASSEMBLY

Installation detection and fixation of guide rail and rack. The professional technicians assemble such important precision parts such as guide rail and rack and adjust them with a dial indicator so as to ensure rack&pinion is assembled properly.



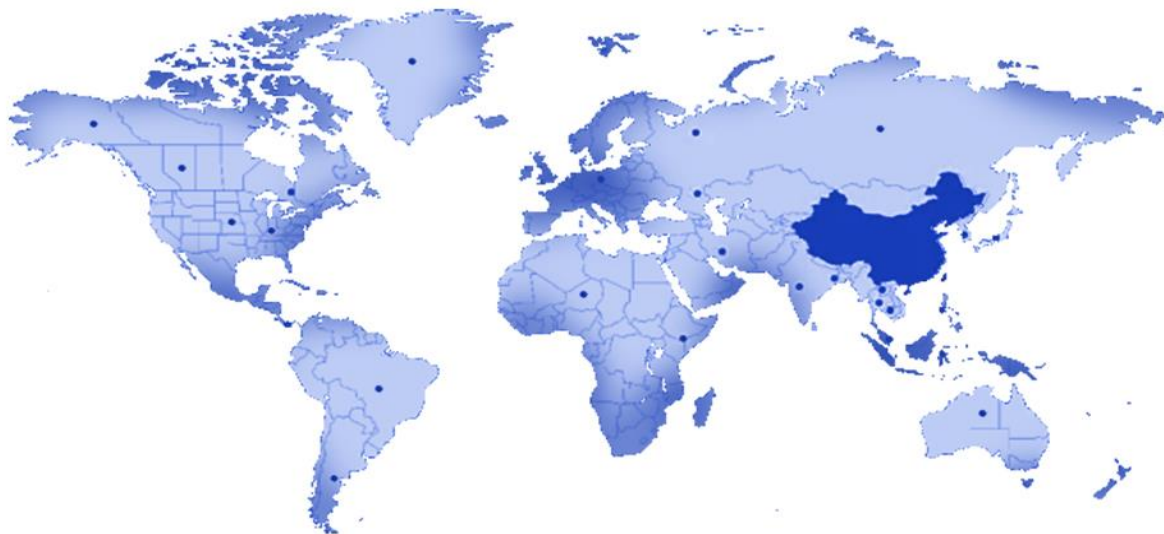
## ASSEMBLY COMPLETION DETECTION

Laser interferometer-It has such advantages as high measurement accuracy and speed,etc Interferometer,mainly laser as light source, constitutes a measuring system withinterference. A laser interferometer with various refractive mirror to the linear position, speed, angle, flatness,straightness, parallelism and perpendicularity measurement work, and can be used as calibration of precision machine tool or measuring instrument.





# Service System



## PRE-SALE SERVICE

- Provide technical guidance, equipment solutions and other information services according to your needs.
- Welcome you to visit our company and equipment exhibition hall. And our engineers will offer the best explanation and demonstration. If you can't come to us, we will do a live broadcast to show you our factory and machine.
- Provide free proofing service.

## SELLING SERVICE



Technicians would offer field installation, debugging and training when they come to the customer's factory.



ON TIME  
Ensure the equipment is delivered on time.



Train customer operators in strict accordance with the equipment operation process to ensure that they are proficient in the operation, maintenance and safe use of the equipment.

## AFTER-SALE SERVICE

- Baisheng provides professional door to door installing and training service, and daily online after sale service and technical advisory.
- We will establish communication group including technicians, after-sales managers, salesmen and operators of customers.



@cotear\_oficial  
Cotear  
www.cotear.com.ar

Av. Juan B. Justo 7251  
X5019HVG Córdoba  
Argentina

+54 9 351 3070609  
0351 450 0160  
ventas@cotear.com.ar

# About Us

## ASSEMBLY WORKSHOP



ASSEMBLY WORKSHOP I



ASSEMBLY WORKSHOP II

## WHOLE INDUSTRIAL CHAIN LAYOUT



· The 10000 m<sup>2</sup> plant area covers sheet metal machining, spray painting, turning, milling, planing, grinding, fine finishing, machine assembly, and process debugging workshops.

· Baisheng Laser has the largest self-owned super-heavy gantry milling and full-temperature CNC high-temperature annealing furnace processing base in the China, ensuring independent production from each piece of sheet metal to the complete machine equipment, and a strict self and mutual inspection process for each process.

· We use superior materials, constantly improve and optimize the process, so that we can win by quality.



@cotear\_oficial  
Cotear  
www.cotear.com.ar

Av. Juan B. Justo 7251  
X5019HVG Córdoba  
Argentina

+54 9 351 3070609  
0351 450 0160  
ventas@cotear.com.ar



# About Us



- ▶ Foshan Huibaisheng Laser Technology Co., Ltd. (Baisheng Laser), founded in 2004, is a high-tech enterprise integrating laser, precision machinery, numerical control, software development and modern management, specializing in the R & D, production and sales of large and medium power laser equipment.
- ▶ Since establishment, Baisheng Laser has developed rapidly. As one of the few laser cutting machine manufacturers in China with the ability to independently produce beams, sheet metal and machine tool frames, Baisheng Laser's Foshan headquarters has a plant area of about 100000 square meters, with 200+ sets of precision machining equipment, 500+ employees, 40+ R & D team and 100+ after-sales engineers.
- ▶ With strong enterprise strength and strong manufacturing strength, Baisheng Laser has become a leading and world-famous large and medium power laser equipment manufacturer and solution provider in China, and its marketing network covers more than 60 countries and regions around the world.



**YOUR TRUST  
OUR RESPONSIBILITY**



@cotear\_oficial  
Cotear  
www.cotear.com.ar

Av. Juan B. Justo 7251  
X5019HVG Córdoba  
Argentina

+54 9 351 3070609  
0351 450 0160  
ventas@cotear.com.ar