

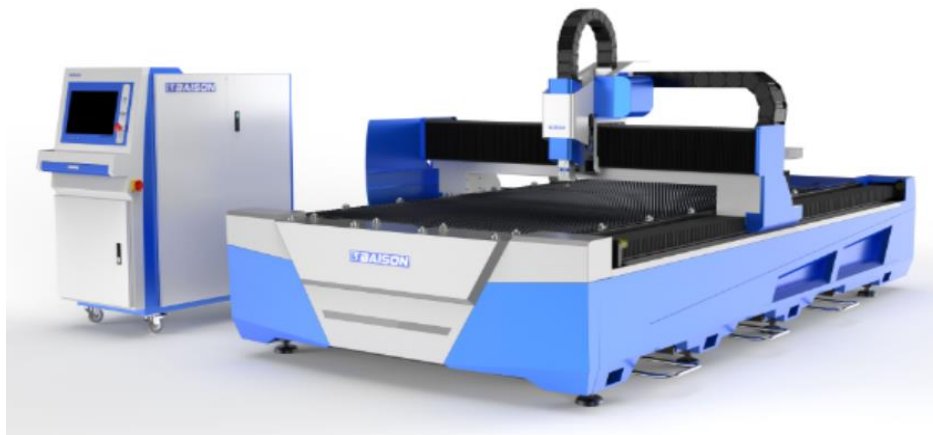
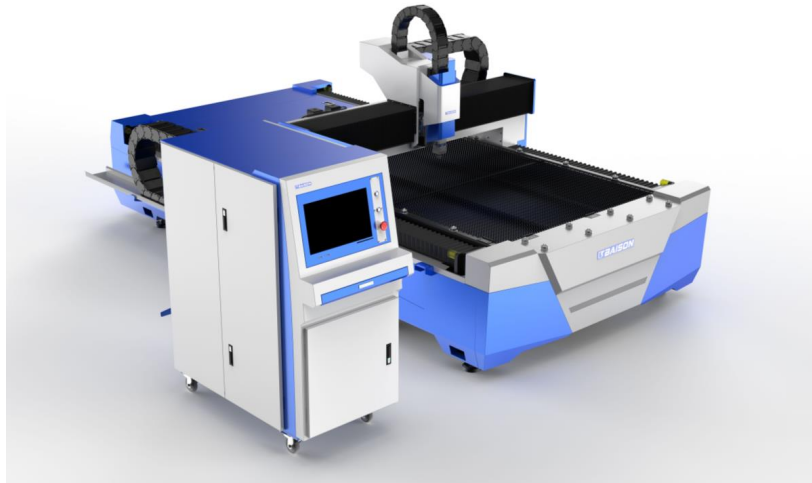


TECHNICAL PROPOSAL



E3-[F3015E]

Product Overview



E3-F3015E

ADVANTAGES

- **High Cutting Accuracy**

Adopting an imported servo motor and a guide transmission mechanism.

- **Simple and Convenient Operation**

Professional software to design various graphics or text for immediate and flexible processing.



Instagram: @cotear_oficial
Facebook: Cotear
Website: www.cotear.com.ar

Address: Av. Juan B. Justo 7251
X5019HVG Córdoba
Argentina

Phone: +54 9 351 3070609
Phone: 0351 450 0160
Email: ventas@cotear.com.ar

Technical Parameter

Processing Format & Working Range	
Processing Area(L × W)	3000mm×1500mm
X-axis Stroke	1520mm
Y-axis Stroke	3050mm
Z-axis Stroke	100mm
Accuracy	
X/Y Axis Positioning Accuracy	±0.03mm/m
X/Y Axis Repositioning Accuracy	±0.03mm
Speed	
Max. Moving Speed	120m/min
Max. Acc. Speed	1.2G
Power Parameters	
Phase	3
Rated Voltage	380V
Frequency	50Hz
Protection Grade	IP54
Weight & Size	
Max Single Worktable Loading	1000kg
Machine Weight	2378KG
Dimension (L×W×H)	4530*2780*2050mm

Note:

- 1: To a certain extent, the accuracy depends on the type of workpiece, the pretreatment, the size of the plate and the position of the plate in the working area.
2. The above parameters are subject to change without notice. The final technical parameters are subject to the actual order agreement.

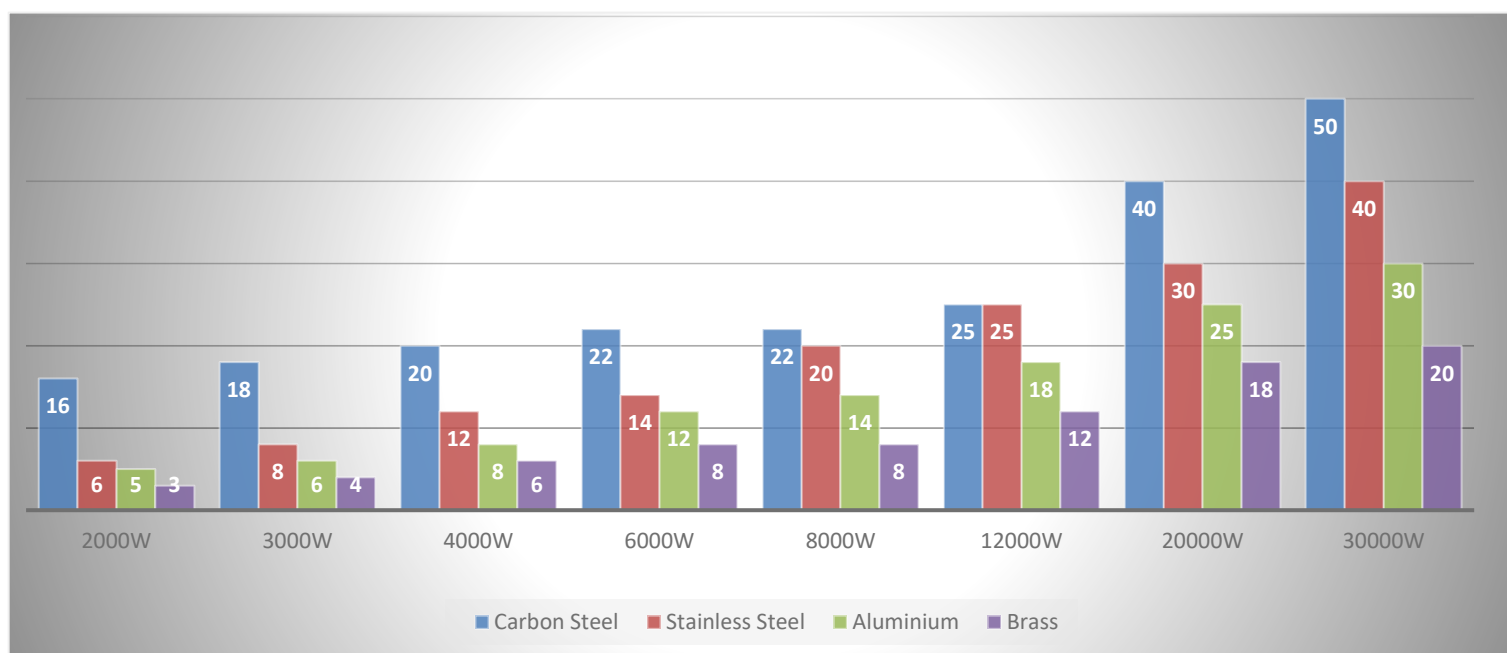


@cotear_oficial
Cotear
www.cotear.com.ar

Av. Juan B. Justo 7251
X5019HVG Córdoba
Argentina

+54 9 351 3070609
0351 450 0160
ventas@cotear.com.ar

Processing Capability



CUTTING SAMPLES

E3-F3015E



Note:

The above parameters are the max processing capabilities.

The above data are for reference only, not as acceptance criteria.



@cotear_oficial
Cotear
www.cotear.com.ar

Av. Juan B. Justo 7251
X5019HVG Córdoba
Argentina

+54 9 351 3070609
0351 450 0160
ventas@cotear.com.ar

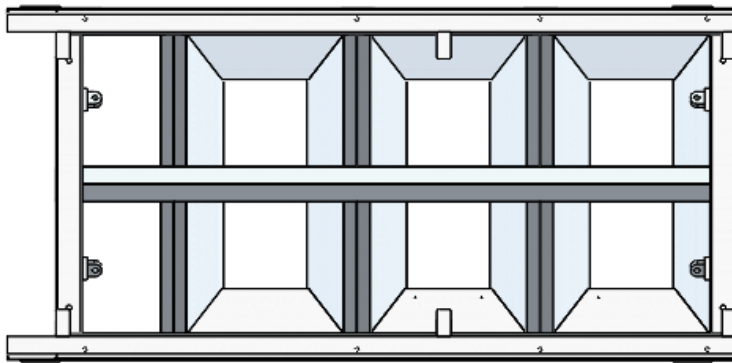
Product Configuration

Configuration	Brand / Specification
E3-F3015E	3000*1500mm
Control System	FSCUT2000E (Below 6KW) 12000W: FSG6000
Laser Source	RAYCUS (CE)
Cutting Head	3000W and below: RAYTOOLS BM110 6000W: RAYTOOLS BM06K 12000W: BOCI BLT441
Servo Motor	VEICHI / YASKAWA
Gear And Rack	KH
Guide	SHAC
Proportional Valve	SMC(Below 6KW) / AVENTICS (Above 6KW)
Reducer	TECHMECH
Control Computer	BAISON
Water Chiller	HANLI



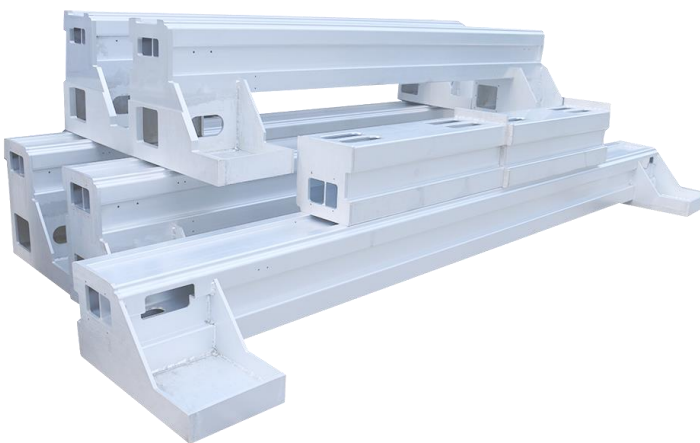
Product Configuration

Super Heavy Steel Welding Machine Bed



- Adopts a 12mm super-thick monolithic steel plate for laser blanking.
- The groove welding method is used to make the plates reach an equal strength butt.
- Stress annealing and natural aging treatment are applied to eliminate internal stress.

Aviation Aluminum Alloy Beam



- The use of aerospace aluminum crossbeam provides a lightweight and rigid structure, ensuring cutting accuracy during high-speed operation.
- The one-piece extrusion stretch film technology makes the crossbeam more robust in overall construction, resulting in a longer lifespan of the machine.

Laser Source



- Higher Electro-optic conversion efficiency
- Superior reliability & modularity
- Easy maintenance and low down time
- Anti high reflection function



Product Configuration

Laser Cutting Head



Images for reference

- Auto focus
- Higher accuracy
- Longer service life
- Calibration and focus lenses and nozzle better protection

MOTOREDUCER



- Stable operation
- Low noise
- Large output torque
- High speed ratio

Servo Motor



- High accuracy
- High-speed performance
- High adaptability & stability
- Timeliness, short dynamic response time of motor
- Comfort less fever and noise



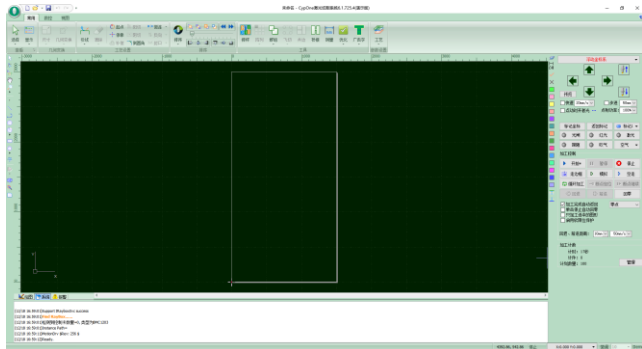
@cotear_oficial
Cotear
www.cotear.com.ar

Av. Juan B. Justo 7251
X5019HVG Córdoba
Argentina

+54 9 351 3070609
0351 450 0160
ventas@cotear.com.ar

Product Configuration

CYPCUT Control System



- Easy to use
- Various file editing functions
- Real-time alarm and protection
- Built-in simple nesting function maximizes the utilization of the sheet metal.
- Fly cutting / Secondary perforation cutting, etc.

Water Cooling System



- Dual cooling function
- Real-time alarm
- Machine protection

Guide



- Low noise
- Wear-resistant
- Smoothly,enable fast speed



Processing Cost

2KW

Items		Air	Oxygen	Nitrogen
Peak Power Consumption (KW)	Laser	7KW	7KW	7KW
	Water Cooling	4KW	4KW	4KW
	Air Compressor	7.5KW	/	/
	Machine Main Frame	6.5KW	6.5KW	6.5KW
	Dust Removal Equipment	1.5KW	1.5KW	1.5KW
Total Power(KW)		USD 0.1/H	USD 0.1/H	USD 0.1/H
Typical Power Consumption(KW) (*75% Total power)		0	USD 2/H	USD 5/H
Power Consumption Cost (0.15USD/kwh)		≈26.5KW	≈19KW	≈19KW
Consumable Parts (USD/h)		≈19.9KW	≈14.3KW	≈14.3KW
Gas Consumption(USD/h)		2.98+0.1 ≈3.08 USD/h	2.14+0.1+2 ≈4.24 USD/h	2.14+0.1+5 ≈7.24 USD/h
Total Operating Cost (USD/h)		7KW	7KW	7KW

If the cutting gas is the dry treated compressed air, the cost is actual the air compressor operating electricity + machine power + consumables (protective lens, cutting mouth).

Note:

1. The electricity price and gas price in the above list are for reference only, and the prices will be different in different regions.
2. Auxiliary gas consumption varies when cutting plates of other thickness.



@cotear_oficial
 Cotear
www.cotear.com.ar

Av. Juan B. Justo 7251
 X5019HVG Córdoba
 Argentina

+54 9 351 3070609
 0351 450 0160
ventas@cotear.com.ar

Processing Cost

3KW

Items		Air	Oxygen	Nitrogen
Peak Power Consumption (KW)	Laser	10.00	10.00	10.00
	Water Cooling	4.16	4.16	4.16
	Air Compressor	11.00	/	/
	Machine Main Frame	12.00	12.00	12.00
	Dust Removal Equipment	5.50	5.50	5.50
Total Power(KW)		42.66	31.66	31.66
Typical Power Consumption(KW) (*75% Total power)		32.00	23.75	23.75
Power Consumption Cost (0.15USD/kwh)		4.80	3.56	3.56
Consumable Parts (USD/h)		0.2	0.2	0.2
Gas Consumption(USD/h)		0	2.5	6
Total Operating Cost (USD/h)		5.00	6.26	9.76

If the cutting gas is the dry treated compressed air, the cost is actual the air compressor operating electricity + machine power + consumables (protective lens, cutting mouth).

Note:

1. The electricity price and gas price in the above list are for reference only, and the prices will be different in different regions.
2. Auxiliary gas consumption varies when cutting plates of other thickness.



@cotear_oficial
 Cotear
www.cotear.com.ar

Av. Juan B. Justo 7251
 X5019HVG Córdoba
 Argentina

+54 9 351 3070609
 0351 450 0160
ventas@cotear.com.ar

Processing Cost

6KW

Items		Air	Oxygen	Nitrogen
Peak Power Consumption (KW)	Laser	18.50	18.50	18.50
	Water Cooling	8.50	8.50	8.50
	Air Compressor	20.00	/	/
	Machine Main Frame	12.00	12.00	12.00
	Dust Removal Equipment	5.50	5.50	5.50
Total Power(KW)		64.50	44.50	29.86
Typical Power Consumption(KW) (*75% Total power)		48.37	33.37	33.37
Power Consumption Cost (0.15USD/kwh)		7.26	5.01	5.01
Consumable Parts (USD/h)		0.2	0.2	0.2
Gas Consumption(USD/h)		0	2.5	6
Total Operating Cost (USD/h)		7.46	7.71	11.21

If the cutting gas is the dry treated compressed air, the cost is actual the air compressor operating electricity + machine power + consumables (protective lens, cutting mouth).

Note:

1. The electricity price and gas price in the above list are for reference only, and the prices will be different in different regions.
2. Auxiliary gas consumption varies when cutting plates of other thickness.



@cotear_oficial
 Cotear
www.cotear.com.ar

Av. Juan B. Justo 7251
 X5019HVG Córdoba
 Argentina

+54 9 351 3070609
 0351 450 0160
ventas@cotear.com.ar

Processing Cost

12KW

Items		Air	Oxygen	Nitrogen
Peak Power Consumption (KW)	Laser	40.00	40.00	40.00
	Water Cooling	21.00	21.00	21.00
	Air Compressor	22.00	/	/
	Machine Main Frame	7.00	7.00	7.00
	Dust Removal Equipment	1.50	1.50	1.50
Total Power(KW)		91.50	69.50	69.50
Typical Power Consumption(KW) (*75% Total power)		68.62	52.12	52.12
Power Consumption Cost (0.15USD/kwh)		10.29	7.82	7.82
Consumable Parts (USD/h)		0.2	0.2	0.2
Gas Consumption(USD/h)		0	2.5	6
Total Operating Cost (USD/h)		10.49	10.52	14.02

If the cutting gas is the dry treated compressed air, the cost is actual the air compressor operating electricity + machine power + consumables (protective lens, cutting mouth).

Note:

1. The electricity price and gas price in the above list are for reference only, and the prices will be different in different regions.
2. Auxiliary gas consumption varies when cutting plates of other thickness.



@cotear_oficial
 Cotear
www.cotear.com.ar

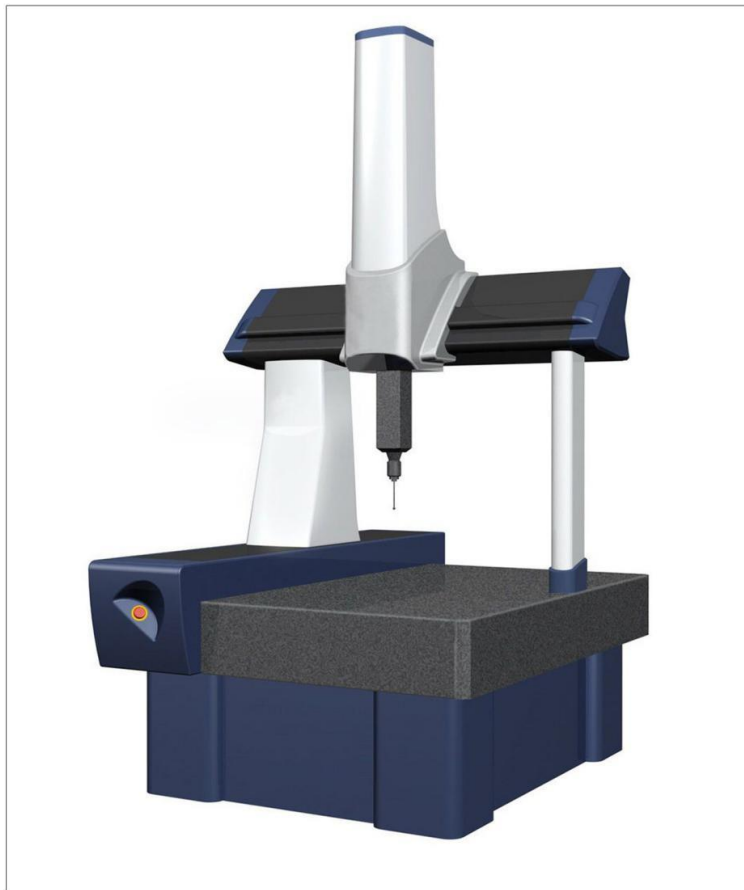
Av. Juan B. Justo 7251
 X5019HVG Córdoba
 Argentina

+54 9 351 3070609
 0351 450 0160
ventas@cotear.com.ar

Inspection & Assembly

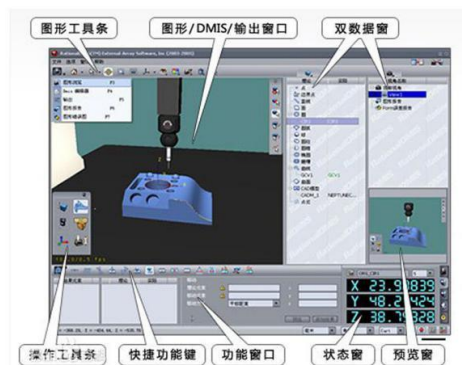
DURING ASSEMBLY

Check whether the beam machining form and position tolerance is within the design scope to ensure the equipment quality.



THREE COORDINATE INSPECTION OF BEAM

Three coordinate measuring machine (CMM) is a kind of instrument that can calculate all kinds of geometric shapes and dimensions according to the point data returned by the probe system in three-dimensional measurable space. It is also called three-dimensional element.



The bed beam collimator detects the guide rail surface - measures the straightness of the guide rail to ensure the accuracy of each equipment.



Inspection & Assembly

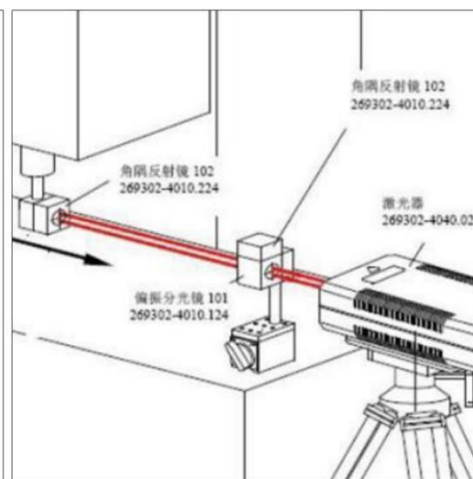
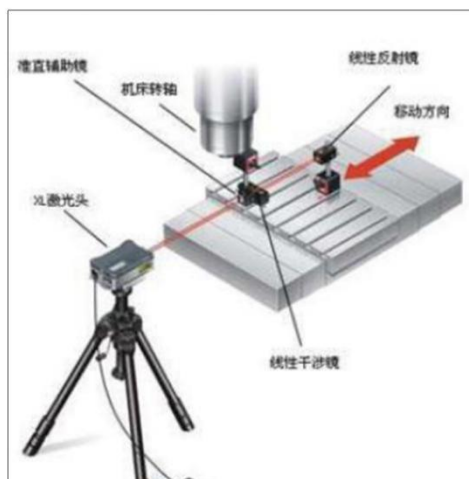
DURING ASSEMBLY

Installation detection and fixation of guide rail and rack. The professional technicians assemble such important precision parts such as guide rail and rack and adjust them with a dial indicator so as to ensure rack&pinion is assembled properly.

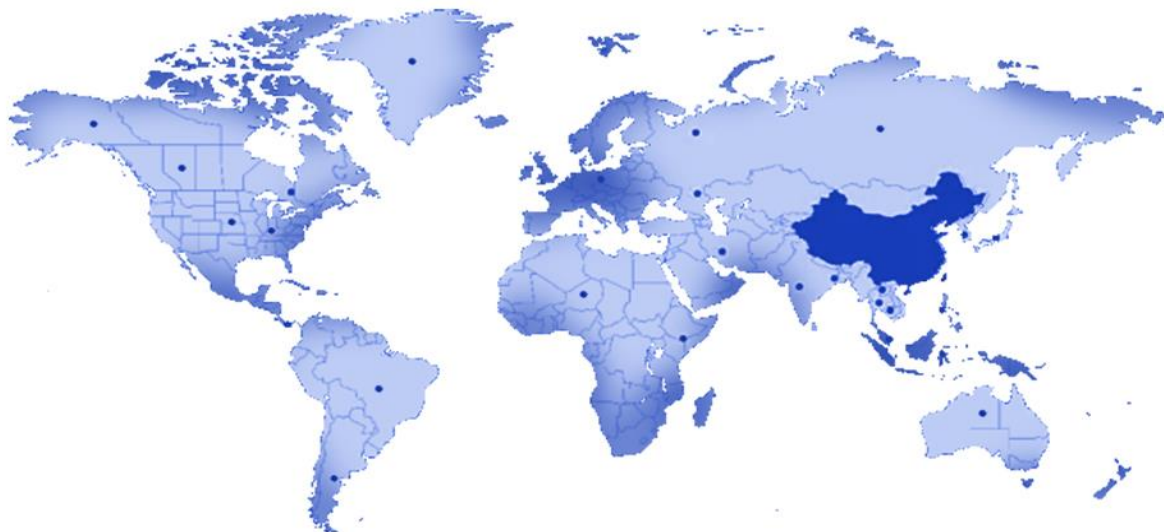


ASSEMBLY COMPLETION DETECTION

Laser interferometer-It has such advantages as high measurement accuracy and speed,etc Interferometer,mainly laser as light source, constitutes a measuring system withinterference. A laser interferometer with various refractive mirror to the linear position, speed, angle, flatness,straightness, parallelism and perpendicularity measurement work, and can be used as calibration of precision machine tool or measuring instrument.



Service System



PRE-SALE SERVICE

- Provide technical guidance, equipment solutions and other information services according to your needs.
- Welcome you to visit our company and equipment exhibition hall. And our engineers will offer the best explanation and demonstration. If you can't come to us, we will do a live broadcast to show you our factory and machine.
- Provide free proofing service.

SELLING SERVICE



Technicians would offer field installation, debugging and training when they come to the customer's factory.



ON TIME
Ensure the equipment is delivered on time.



Train customer operators in strict accordance with the equipment operation process to ensure that they are proficient in the operation, maintenance and safe use of the equipment.

AFTER-SALE SERVICE

- Baisheng provides professional door to door installing and training service, and daily online after sale service and technical advisory.
- We will establish communication group including technicians, after-sales managers, salesmen and operators of customers.



@cotear_oficial
Cotear
www.cotear.com.ar

Av. Juan B. Justo 7251
X5019HVG Córdoba
Argentina

+54 9 351 3070609
0351 450 0160
ventas@cotear.com.ar

About Us

ASSEMBLY WORKSHOP



ASSEMBLY WORKSHOP I



ASSEMBLY WORKSHOP II

WHOLE INDUSTRIAL CHAIN LAYOUT



- The 10000 m² plant area covers sheet metal machining, spray painting, turning, milling, planing, grinding, fine finishing, machine assembly, and process debugging workshops.
- Baisheng Laser has the largest self-owned super-heavy gantry milling and full-temperature CNC high-temperature annealing furnace processing base in China, ensuring independent production from each piece of sheet metal to the complete machine equipment, and a strict self and mutual inspection process for each process.
- We use superior materials, constantly improve and optimize the process, so that we can win by quality.



@cotear_oficial
Cotear
www.cotear.com.ar

Av. Juan B. Justo 7251
X5019HVG Córdoba
Argentina

+54 9 351 3070609
0351 450 0160
ventas@cotear.com.ar

About Us



► Foshan Huibaisheng Laser Technology Co., Ltd. (Baisheng Laser), founded in 2004, is a high-tech enterprise integrating laser, precision machinery, numerical control, software development and modern management, specializing in the R & D, production and sales of large and medium power laser equipment.

► Since establishment, Baisheng Laser has developed rapidly. As one of the few laser cutting machine manufacturers in China with the ability to independently produce beams, sheet metal and machine tool frames, Baisheng Laser's Foshan headquarters has a plant area of about 100000 square meters, with 200+ sets of precision machining equipment, 500+ employees, 40+ R & D team and 100+ after-sales engineers.

► With strong enterprise strength and strong manufacturing strength, Baisheng Laser has become a leading and world-famous large and medium power laser equipment manufacturer and solution provider in China, and its marketing network covers more than 60 countries and regions around the world.



**YOUR TRUST
OUR RESPONSIBILITY**



Instagram: @cotear_oficial
Facebook: Cotear
Website: www.cotear.com.ar

Location: Av. Juan B. Justo 7251
X5019HVG Córdoba
Argentina

Phone: +54 9 351 3070609
Phone: 0351 450 0160
Email: ventas@cotear.com.ar